



TECHNICAL REQUIREMENTS AND SPECIFICATIONS

PROJECT: Miguel Fuentes Pinet Stadium Damages Repair
City: Loiza

Location: **Latitude:** 18.4333 **Longitude:** -65.876999

Project Num.: 87600 **PW:** 3335 **Damage Inventory:** 251038

Adquisition : Formal Bid

Proposal Solicitation: RFP

HON. RAY J. QUIÑONES VÁZQUEZ
SECRETARY
DRD- PUERTO RICO
HURRICANE MARIA DAMAGE RECONSTRUCTION



FEMA



Miguel Fuentes Pinet Stadium Facility Damages Repair

SOW Electrical Work

Baseball Field

- 1) Remove, dispose, supply, install and replace a lighting pole, 1 each of 75' STADIUM LIGHT, POLE, Use existing base and foundation (metal athletic light pole, 75 FT long).
- 2) Remove, dispose, supply, install and replace the Athletic Fields, Low Voltage Electrical Power Conductors and Cables – Non-metallic sheathed cable, service entrance cable, copper, 600V, 2 conductor, 1/0 + 1/0 neutral, type SEU, 200 FT long aprox. for the new lighting pole. (Includes the use of equipment such as the scissor type lift and telescoping boom.)
- 3) Remove, dispose, supply, install and replace the Lighting, PVC conduit, schedule 40, 2-1/2" diameter, to 15'H, Incl terminations, fittings, & support conduit, 200 LF long aprox.
- 4) Remove, dispose, supply, install and replace existing stadium 1500 Watts lighting fixtures, 74 each, by a LED 1500 Watts Lighting fixture equal or similar to Musco TLC-LED-1500. Provide photogrammetric design for broadcast baseball stadium use. Include all control and monitoring cabinet, on/off/auto switches, crossarms, auxiliary mounting brackets, etc.

Stadium Grandstand

- 1) Remove, dispose, supply, install and replace the existing HID quartz restrike Lighting by new LED high bay lighting -250W HID equivalent- 40 each of exterior high bay canopy, include lamps, mounting hardware, new rough-in, wires, connections and interrupter switches. (grandstand area).
- 2) Supply and install new double duplex receptacle using 4 x 4 electrical box 2ea , for the new transmission station room. Include rough-in and wiring as per code and standards.
- 3) Supply and install new lighting fixture for the new transmission station. Include rough-in, wiring and switch as per code and standards. Equal or similar to FML4W Wraparound by Lithonia Lighting by Lithonia.



Stadium – Interior

- 1) Remove, dispose, supply, install and replace all existing interior room florescent lighting fixture by new LED Lighting Fixture equal or similar to FML4W Wraparound by Lithonia Lighting, 30 ea. Include all switches and cover.
- 2) Remove, dispose, supply, install and replace all hallway ceiling lighting fixture 10 each by LED Weatherproof equal or similar to CSVT LED Vapor Tight by Lithonia lighting fixture. Include all switches and cover.
- 3) Remove, dispose, supply, install and replace all existing emergency lighting fixture, OUTDOOR WET LOCATION LED EMERGENCY LIGHTING FIXTURE - BATTERY - SURFACE MOUNT. – 7 EA
- 4) Remove, dispose, supply, install and replace all existing EXIT Light Sign . OUTDOOR WET LOCATION LED EMERGENCY LIGHTING FIXTURE - BATTERY - SURFACE MOUNT. - 6 EA.

Stadium – Exterior

- 1) Remove, dispose, supply, install and replace all existing exterior wall pack lighting fixture by new LED Lighting Fixture equal or similar to TWP LED 50K, by Lithonia Lighting 18 ea. Include all photocell, switches and cover.
- 2) Remove, dispose, supply, install and replace all existing exterior ceiling pack lighting fixture by new LED Lighting Fixture equal or similar to CNY LED P1 40K MVOLT DDB M4, by Lithonia Lighting 7 ea. Include all photocell, switch and cover.
- 3) Remove, dispose, supply, install and replace all existing exterior parking lot pole and lighting fixture by new LED Lighting Fixture and pole equal or similar to Model MLLG-WL-POLE-15FT-4IN-SQ-BZ as manufactured by LED LIGHTING SUPPLY. 9 ea. Include all photocell, switch and cover.
- 4) Supply and install new digital LED Scoreboard, 9' x 4'. Installation at the previous location where electric connection is available.
- 5) Remove, dispose, supply, install and replace existing interior room florescent lighting fixture at the Guard Shack by new LED Lighting Fixture equal or similar to FML4W Wraparound by Lithonia Lighting, 30 ea. Include all switches and cover.



SOW Structural Work

- 1) The contractor is responsible to Remove, dispose, supply, install, dispose and replace the existing steel roof structure. See drawings set included.
- 2) Remove, dispose, supply, install and replace the Covered Shelters, 19,200 SF Aprox. of Metal roof decking, steel, open wide rib, galvanized, 22-gauge section of roof (Decking) over stadium grandstand, See drawing set included. The contractor is responsible to provide a certified signed and sealed updated design, complying with all current design codes, standard and regulations.
- 3) Steel structure manufacturer shall be certified as well as the welders performing the structure installation.

Facility Damage – Perimeter Fence and Gate

- 1) Supply and install new aluminum fence along the property line along PR-187
- 2) Supply and install two (2) double swing gate with front wheel:
 - a. Location: PR-951 entrance
 - b. Location: PR-187 entrance
- 3) Material Description:
 - a. 6063-T5 Aluminum
 - b. 72" Section Length.
 - c. Pickets: 5/8"sq. x .050" Wall
 - d. Rails: 1" sq. x .055" Wall
 - e. AAMA 2604 TGIC Polyester Powder Coating – BLACK FINISH
 - f. Screws: hardened 410 Stainless Steel with Cr6 Plating and Colored Heads
 - g. Concrete base: 36" (depth) x 14" (diameter)
- 4) Product Reference:
 - a. Similar or equal to Shop Fencing – Ashville Residential, ShopFencing.com

Facility Damage – Stadium Seating

- 1) Remove, dispose, supply, install and dispose all existing stadium seating.
- 2) Paint all wall and floor. Refer to Paint scope section for details.
- 3) Paint color to be selected by the Owner.
- 4) Supply and install new stadium seating. Seating capacity of 1380 approximately. Variable width.
- 5) Material Description:
 - a. Seat: Polypropylene Seat Pan
 - b. Seat Rising Mechanism: Gravity Lift Mechanism
 - c. Back: 32 1/2" Height, High-impact, 8mm Thick Molded Plastic Back



- d. Armrests: ASTM A48 for Class 25 gray cast iron seat arms.
- e. Aisle ends: Tapered
- 6) Product Reference:
 - a. Similar or equal to Irwing Seating Company, model 408.408.202.202 American Stadium

Facility Damage – Restrooms Renovation

- 1) Remove, dispose, supply, install all restroom equipment: toilets, lavatories and accessories.
- 2) Toilet partitions and wall tile to remain. Refer to Paint scope section for details.
- 3) Supply and install new ADA complaint restroom equipment and accessories. Include all fittings, valve, p-trap, tail piece, etc.
- 4) Clean and paint existing flooring with anti-slip coating. Refer to Paint scope section for details.
- 5) Repair toilet partitions by anchoring all existing pilasters with four (4) aluminum angle brackets, cover all pilaster bases with new stainless steel pilaster shoes, Supply and install premium stainless steel door latch and paint all partition compartments. Partition compartments surfaces to be sanded, clean with denature alcohol, and painted with one coat of primer and two (2) coats of paint.
- 6) Remove, dispose, supply, install and replace toilet fixture. Include toilet seats, fittings and valve. Ensure fixture fits in the existing sanitary connection.
- 7) Material Description:
 - a. Lavatory: Wall-mounted. Vitreous China, White, 20-½ in x 18-¼ in with 4 in center faucet holes, front overflow, D-shaped bowl. Thirteen (13) lavatories are needed.
 - b. Faucets: Conventional widespread, 0.5 GPM pressure compensating, vandal-resistant multi-laminar spray. Factory set for a maximum of 0.08 gallons per cycle.
 - c. Mirror: Welded Frame Glass Mirror 24" W x 30" H, wall-mounted with concealed, theft-resistant hanger system, 1-piece, roll-formed angle frame with beveled edge, ¼ in glass mirror. Mirror resists silver spoilage for as long as 15 years. Thirteen (13) mirrors are needed.
 - d. Soap Dispenser: Surface-mounted soap dispenser, one per lavatory. Stainless steel satin finish, 40 fl.oz. Capacity, 8-½" W x 4-¾" H x 3-½" D. Thirteen (13) soap dispensers are needed.
 - e. Paper Towel Dispenser: Surface-mounted, Stainless steel satin finish, 10-¾"W x 14"H x 4"D, dispenses 400 C-fold or 525 multifold towels. Door equipped with tumbler lock. One paper towel dispenser per restroom. Five (5) paper towel dispensers are needed.



- f. Shower Head: Commercial shower system Institutional 1.5 gpm/5.7 Lpf showerhead. Pressure balance, vandal resistant, water efficient.
 - g. Shower Faucet: Lever handle type, ADA compliant, chrome finish
 - h. Soap Dish: Surface-mounted soap dish, stainless steel, bright polished finish, 4-1/4" W x 3-3/8" D. Supply and install one per shower.
 - i. Toilet Paper Dispenser: Surface-mounted, multi-roll, stainless steel, satin finish, 6-1/16" W x 11" H x 5-15/16" D. Holds two rolls up to 5-1/4" in diameter. Theft –resistant, heavy-duty spindles. Thirteen (13) toilet paper dispensers are needed.
 - j. Floor: Refer to Paint scope section for details
 - k. Toilet Partitions: Water-based epoxy coating. Color to be selected by Owner.
 - l. Toilets: Single flush. Flush volume is 1.1 GPF to 1.6 GPF. Outfitted with a 2-1/8 in. Fully glazed trapway, elongated toilet seat, WaterSense, Dimensions 16.5 in. H, 14 in. W, 28.25 in. D. Thirteen (13) toilets are needed.
 - m. Urinals: Low consumption, 1.0 gallon per flush (1.0 gpf/3.8 Lpf). Siphon jet flush action. Extended sides for privacy, vitreous china. Eight (8) urinals are needed.
 - n. Grab bars: 24" stainless steel satin finish, ADA compliant grab bar. Concealed mounting grab bar with snap flange. Eight (8) grab bars needed.
- 8) Product Reference:
- a. Lavatory: Similar or equal to American Standard, Lucerne Wall Hung Lavatory Model 0355.012
 - b. Faucets: Similar or equal to American Standard Metering Faucet Model 1340.827
 - c. Mirror: Similar or equal to Bobrick B-290 Series, Model B-2902430
 - d. Soap Dispenser: Similar or equal to Bobrick Classic Series, Model B-2112
 - e. Paper Towel Dispenser: Similar or equal to Bobrick B-2629
 - f. Shower Head: Similar or equal to American Standard Model 1660244.002
 - g. Shower Faucet: Similar or equal to Delta Model T17035-p
 - h. Soap Dish: Similar or equal to Bobrick Model B-680 Series
 - i. Toilet Paper Dispenser: Similar or equal to Bobrick Model B-2888 Classic Series
 - j. Floor: Refer to Paint scope section for details
 - k. Toilet Partitions: Similar or equal to Sherwin Williams Pro-Industrial Pre-Catalyzed Waterbased Epoxy
 - l. Toilets: Similar or equal to American Standard model 2854.128 or Madera Chair Height EverClean Toilet System with Manual Piston Flush Valve, 1.28 gpf/4.8 Lpf.
 - m. Urinals: Similar or equal to American Standard model 6561.017, Trimbrook
 - n. Grab bar: Similar or equal to Bobrick B-5806x24.



Facility Damage – Paint

- 1) Clean and patch all existing surfaces
- 2) Flooring: Apply anti-slip floor coating designed for heavy pedestrian traffic.
- 3) Wall-tile: Apply Special Tub & Tile Refinishing kit, two-part epoxy acrylic, Use Coastal Fog color.
- 4) Walls: Clean and patch existing surface. Apply one (1) coat of primer and two (2) coats of water-based epoxy paint.
- 5) Murals: Protect existing murals. These areas will not be painted but maintained.
- 6) Product Description:
 - a. Floors: Similar or equal to American Safety Technologies AS-150 HAPS Free Anti-Slip Coating
 - b. Wall Tiles: Similar or equal to Rust-Oleum Specialty Tub & Tile Refinishing kit.
 - c. Toilet Partitions: Similar or equal to Sherwin Williams Pro Industrial Pre-catalyzed Waterbased Epoxy
 - d. Shower Walls – Similar or equal to Sherwin Williams Pro Industrial Pre-catalyzed Waterbased Epoxy
 - e. Steel Structures: Similar or equal to Sherwin Williams Pro Industrial DTM Acrylic Primer/Finish. Apply two (2) coats.
 - f. Exterior Wall Paint: Similar or equal to Sherwin-Williams Quick Dry Interior/Exterior Stain Blocking Primer. Apply two (2) coats. A-100 Exterior acrylic Latex. Apply two (2) coats.
 - g. Interior Wall Paint: Similar or equal to Sherwin-Williams Moisture Vapor Barrier Interior Latex primer/sealer. Apply two (2) coats. Promar 400 Zero VOC Interior Latex Primer. Apply two (2) coats.

Facility Damage – Safety Grate

- 1) Remove, dispose, supply, install and replace existing grate.
- 2) Replace grate using existing section pattern and installation.

Facility Damage – Concrete Repair

- 1) Chip existing loose concrete and treat the exposed rebar. Clean exposed rebar with a steel brush and apply Loctite Extend Rust Neutralizer.
- 2) Apply bonding primer and reinforcement corrosion protection
- 3) Patch and finish the affected area with Vinyl Concrete Patch
- 4) Products:
 - a. Rust neutralizer: Loctite Rust Neutralizer



- b. Bonding Primer: Similar or equal to Sika Armatec – 110 EpoCem
- c. Patch: Similar or equal to ProSpec Vinyl Concrete Patch

Facility Damage – Netting

- 1) Remove, dispose, supply, install and replace existing protection foul netting.
- 2) Supply and install bleachers ceiling protection net.
- 3) Products:
 - a. Foul netting: Similar or equal to Carronnet – 77711 #420 knotless 1.75” Baseball & Softball Foul Ball & Perimeter Nets.
 - b. Ceiling Net: Similar or equal to Carronnet – 77706 #252 knotless 0.75”

Facility Damage – Impact Resistance Windows

- 1) Supply and install Impact-resistant window panels at ADA. Station.

Facility Damage – Hollow Metal Doors

- 1) Remove, dispose, supply, install existing doors.
- 2) Supply and install new hollow metal doors. Include new frame, lockset, door holder, door stop

Facility Damage Roof Repair

- 1) Remove, dispose, supply, install any existing roof treatment.
- 2) Prepare roof surface and apply asphalt emulsion sealer per product manufacturer’s instructions.
- 3) Products:
 - a. Roof sealer: Equal or similar to Danosa Roofing Products, Richport Modified, Asphalt Emulsion Sealer.

New Transmission Station

- 1) Supply and build a new Transmission Station that include cmu walls, concrete beams, plaster and paint finish. See typical details.
- 2) Supply and install new steel roof system. See typical details.



- 3) Supply and install new lighting fixture new LED Lighting Wraparound and receptacles as specified on drawings.
- 4) Supply and install new fixed window with plexiglass. Install as per manufacturer recommendations.

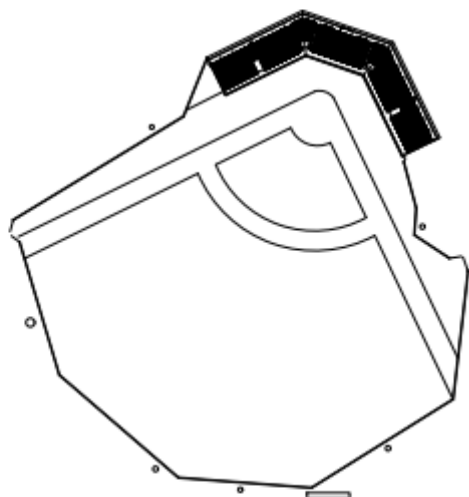
Existing Parking Stall:

- 1) Repair existing panel Board, supply and install new cover, new circuit breaker and terminal blocks. Supply and install new wiring for the removal supply and replace existing lighting fixture.
- 2) Supply and install new lighting fixture new LED Lighting Wraparound and receptacles- two (2).
- 3) Remove, dispose supply and install existing window. Install as per manufacturer recommendations.
- 4) Paint all wall (interior and Exterior) following paint notes.
- 5) Install new waterproofing system as specified in documents. Contractor shall provide 5 YR Warranty.

All window replacement shall include the concrete patch repair and paint around the window. All window installation must be as per manufacturer recommendation.

Buy American Act Requirements:

Buy American requirements apply to purchases of iron, steel, and other manufactured products permanently incorporated into infrastructure projects. To be considered as being produced in the U.S., goods must be manufactured in the U.S. and at least 50% of the cost of their components must come from the U.S.

[illegible][illegible]

#0 BSN 9806007
CITY OF LOS ANGELES DEPARTMENT OF PUBLIC WORKS

TITLE	ENTERED
RESEARCH WORK OF REUEL FURBER ON THE ALKALINE LAKES OF WESTERN CANADA	APR 22 1962
U. S. DEPARTMENT OF AGRICULTURE WASHINGTON, D. C.	

--	--

SIGNATURE AND REAL
EYES, ORIGINALLY WRITTEN
LO. 8 1710
DATE: _____
ELECTRONIC SIGNATURE

SHEET
IDENTIFICATION
T-1
SCALE:
NPS

Miguel Fuentes Pinet Stadium Damages Repair

STRUCTURAL STEEL / STEEL ROOF DECK NOTES

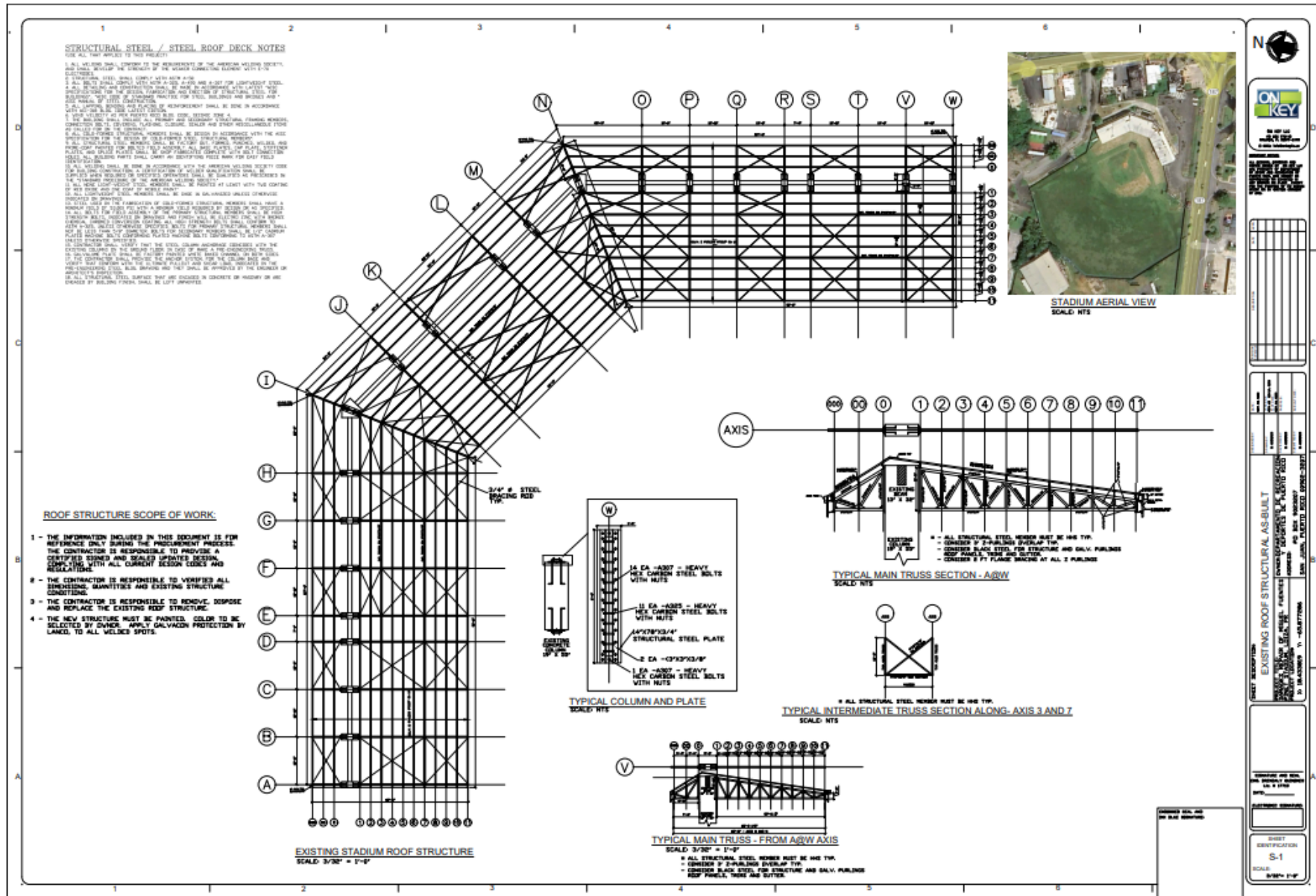
(USE ALL THAT APPLIES TO THIS PROJECT)

1. ALL WELDING SHALL CONFORM TO THE REQUIREMENTS OF THE AMERICAN WELDING SOCIETY, AND SHALL DEVELOP THE STRENGTH OF THE WEAKER CONNECTING ELEMENT WITH E-70 ELECTRODES.
2. STRUCTURAL STEEL SHALL COMPLY WITH ASTM A-50
3. ALL BOLTS SHALL COMPLY WITH ASTM A-325, A-490 AND A-307 FOR LIGHTWEIGHT STEEL.
4. ALL DETAILING AND CONSTRUCTION SHALL BE MADE IN ACCORDANCE WITH LATEST 'AISC SPECIFICATIONS FOR THE DESIGN, FABRICATION AND ERECTION OF STRUCTURAL STEEL FOR BUILDINGS', 'AISC CODE OF STANDARD PRACTICE FOR STEEL BUILDINGS AND BRIDGES AND ' AISC MANUAL OF STEEL CONSTRUCTION.
5. ALL LAPPING, BENDING AND PLACING OF REINFORCEMENT SHALL BE DONE IN ACCORDANCE WITH ACI-318 BLDG. CODE LATEST EDITION.
6. WIND VELOCITY AS PER PUERTO RICO BLDG. CODE, SEISMIC ZONE 4.
7. THE BUILDING SHALL INCLUDE ALL PRIMARY AND SECONDARY STRUCTURAL FRAMING MEMBERS, CONNECTION BOLTS, COVERING, FLASHING, CLOSURE, SEALER AND OTHER MISCELLANEOUS ITEMS AS CALLED FOR ON THE CONTRACT.
8. ALL COLD-FORMED STRUCTURAL MEMBERS SHALL BE DESIGN IN ACCORDANCE WITH THE AISC SPECIFICATION FOR THE DESIGN OF COLD-FORMED STEEL STRUCTURAL MEMBERS'.
9. ALL STRUCTURAL STEEL MEMBERS SHALL BE FACTORY CUT, FORMED, PUNCHED, WELDED, AND PRIME-COAT PAINTED FOR BOLTED FIELD ASSEMBLY. ALL BASE PLATES, CAP PLATE, STIFFENER PLATES, AND SPLICE PLATES SHALL BE SHOP FABRICATED COMPLETE WITH BOLT CONNECTION HOLES. ALL BUILDING PARTS SHALL CARRY AN IDENTIFYING PIECE MARK FOR EASY FIELD IDENTIFICATION.
10. ALL WELDING SHALL BE DONE IN ACCORDANCE WITH THE AMERICAN WELDING SOCIETY CODE FOR BUILDING CONSTRUCTION, A CERTIFICATION OF WELDER QUALIFICATION SHALL BE SUPPLIED WHEN REQUIRED OR SPECIFIED. OPERATORS SHALL BE QUALIFIED AS PRESCRIBED IN THE 'STANDARD PROCEDURE OF THE AMERICAN WELDING SOCIETY.'
11. ALL NONE LIGHT-WEIGHT STEEL MEMBERS SHALL BE PAINTED AT LEAST WITH TWO COATING OF RED OXIDE AND ONE COAT OF MOBILE PAINT'
12. ALL LIGHTWEIGHT STEEL MEMBERS SHALL BE GAGE 16 GALVANIZED UNLESS OTHERWISE INDICATED ON DRAWINGS.
13. STEEL USED IN THE FABRICATION OF COLD-FORMED STRUCTURAL MEMBERS SHALL HAVE A MINIMUM YIELD OF 53,000 PSI WITH A MINIMUM YIELD REQUIRED BY DESIGN OR AS SPECIFIED.
14. ALL BOLTS FOR FIELD ASSEMBLY OF THE PRIMARY STRUCTURAL MEMBERS SHALL BE HIGH STRENGTH BOLTS, INDICATED ON DRAWINGS AND FINISH WILL BE ELECTRO ZINC WITH BRONZE CHEMICAL CHROMED CONVERSION COATING. ALL HIGH STRENGTH BOLTS SHALL CONFORM TO ASTM A-325, UNLESS OTHERWISE SPECIFIED. BOLTS FOR PRIMARY STRUCTURAL MEMBERS SHALL NOT BE LESS THAN 5/8" DIAMETER. BOLTS FOR SECONDARY MEMBERS SHALL BE 1/2" CADMIUM PLATED MACHINE BOLTS CONFORMING PLATED MACHINE BOLTS CONFORMING TO ASTM A-307 UNLESS OTHERWISE SPECIFIED.
15. CONTRACTOR SHALL VERIFY THAT THE STEEL COLUMN ANCHORAGE COINCIDES WITH THE EXISTING COLUMNS ON THE GROUND FLOOR. IN CASE OF MAKE A PRE-ENGINEERING TRUSS.
16. GALVALUME PLATE SHALL BE FACTORY PAINTED WHITE BAKED CHANNEL ON BOTH SIDES.
17. THE CONTRACTOR SHALL PROVIDE THE ANCHOR SYSTEM, FOR THE COLUMN BASE AND VERIFY THAT CONFORM WITH THE ULTIMATE PULLOUT AND SHEAR LOAD, INDICATED IN THE PRE-ENGINEERING STEEL BLDG. DRAWING AND THEY SHALL BE APPROVED BY THE ENGINEER OR ARCHITECT'S INSPECTION.
18. ALL STRUCTURAL STEEL SURFACE THAT ARE ENCASED IN CONCRETE OR MASONRY OR ARE ENCASED BY BUILDING FINISH, SHALL BE LEFT UNPAINTED.



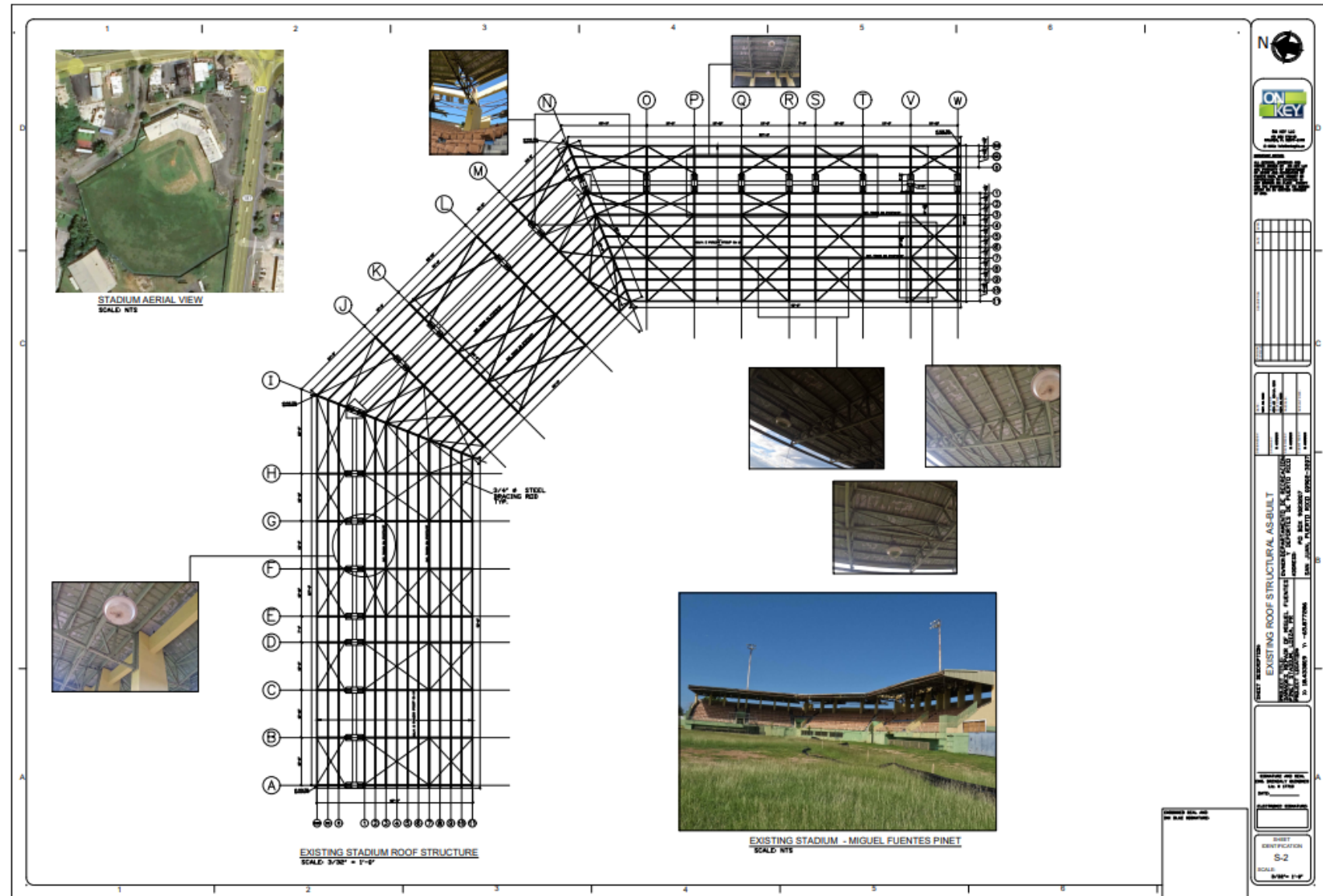
- Provide a structural roof design meeting the actual codes and regulations, signed and sealed by a professional engineer.

- See Drawing Set attached

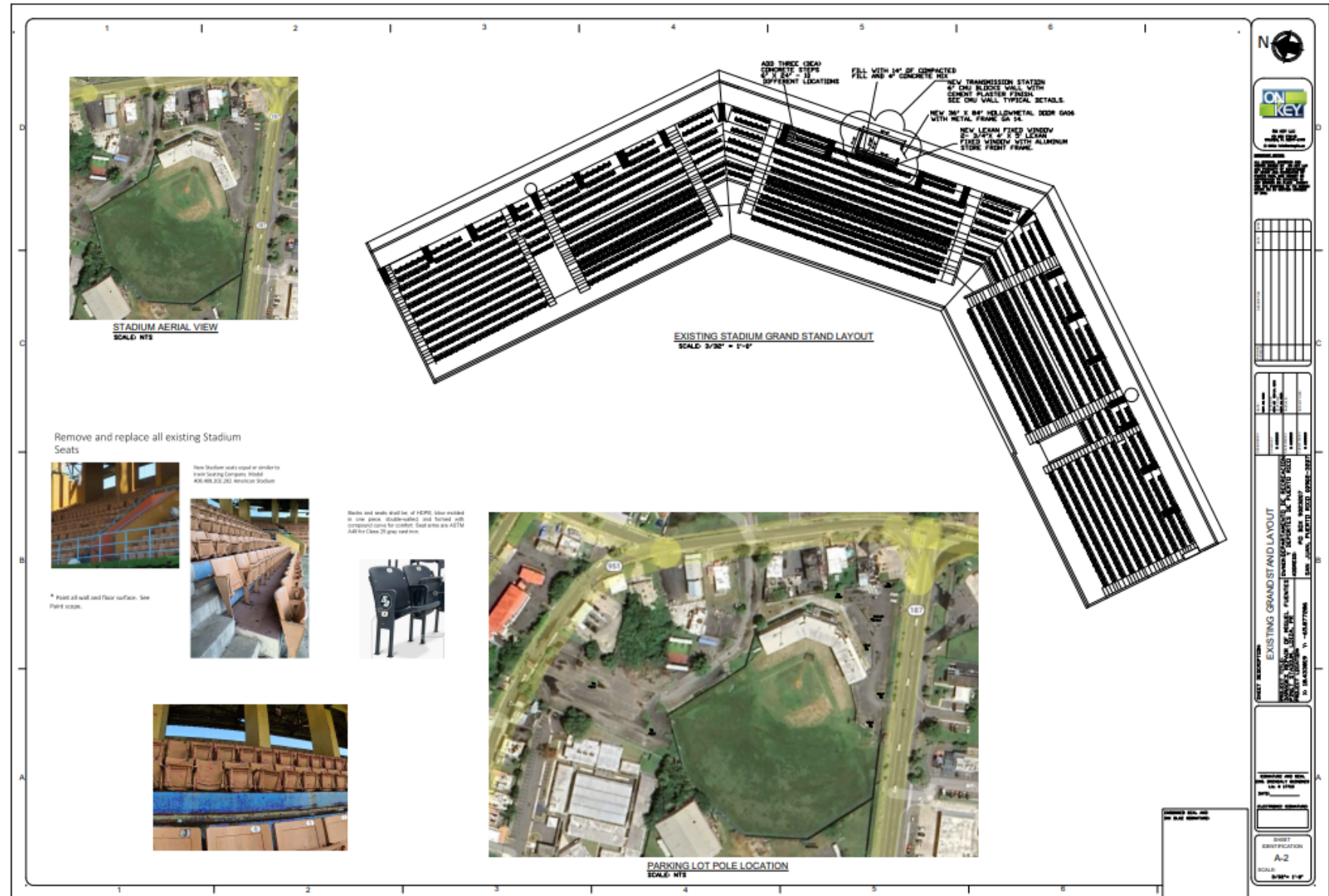


ROOF EXISTING CONDITIONS

- See Drawing Set attached

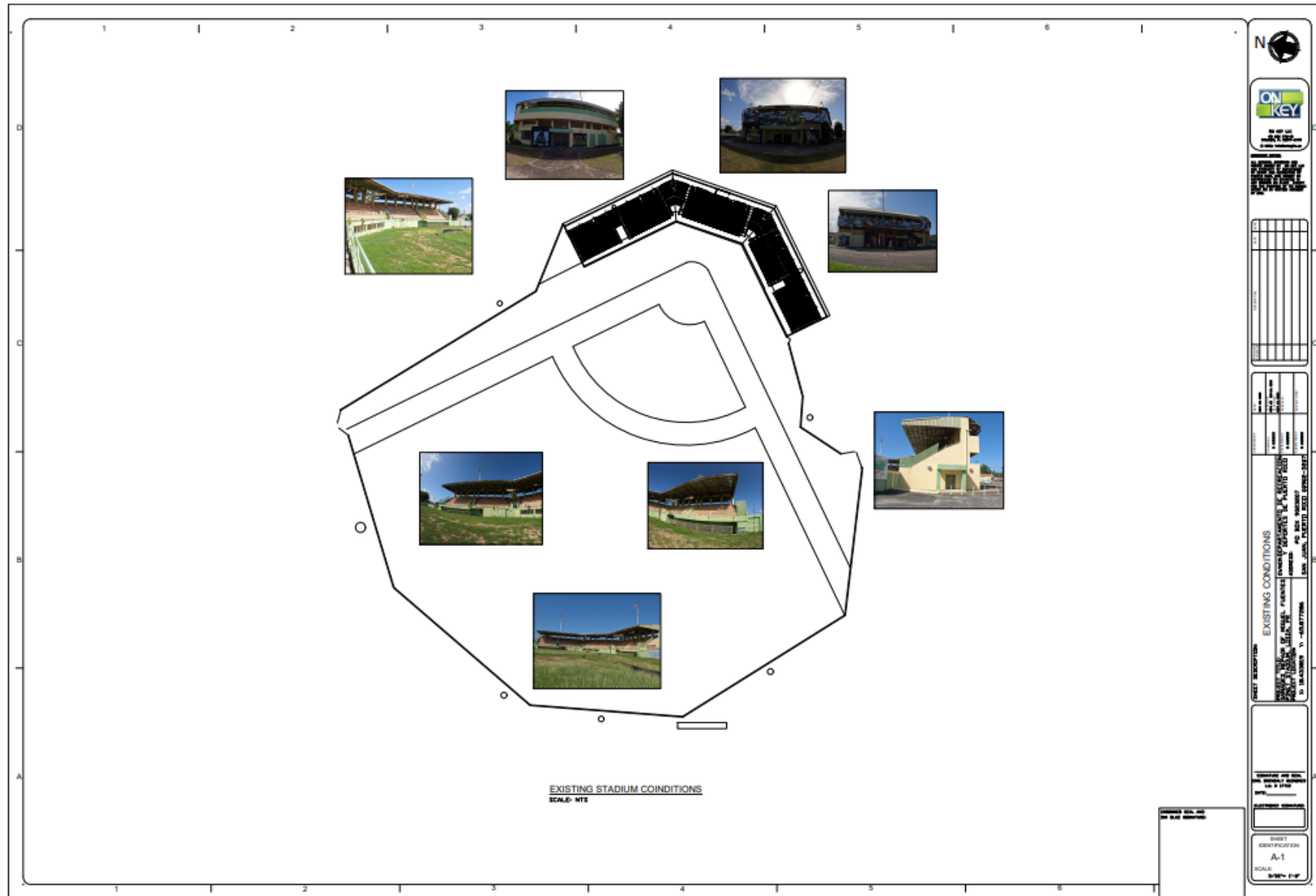


GRANDSTAND LAYOUT



- See Drawing Set attached

STADIUM EXISTING CONDITIONS

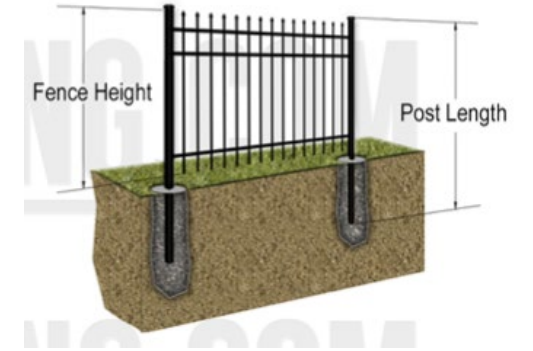


- See Drawing Set attached

Install New Perimeter Fence and Gate

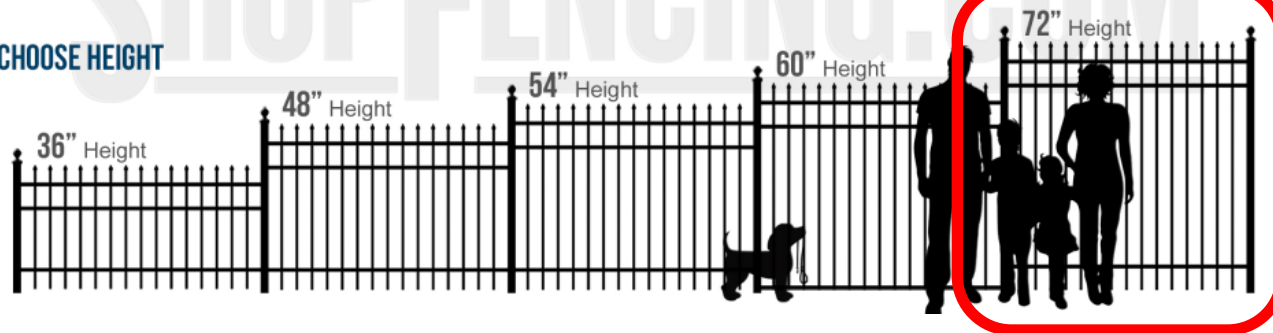


Install new aluminum fence equal or similar to Shop Fencing Model Ashville Industrial 72" x 98" – Four (4) Rail with 4" x 4" post and install two (double swing gate, with front wheel).
Post 36' x 14" concrete base.



Ashville Commercial or Industrial Aluminum Fencing
Material: 6063-T5 Aluminum • 72" and 96" Section Length • AAMA 2604 TGIC Polyester Powder Coating
• Screws: Hardened 410 Stainless Steel With Cr6 Plating and Colored Heads

CHOOSE HEIGHT



New Fence



New
Swing
Gate

Image © 2022 Airbus

Remove and replace all existing Stadium Seats



New Stadium seats equal or similar to
Irwin Seating Company Model
408.408.202.202 American Stadium



* Paint all wall and floor surface. See
Paint scope.

Backs and seats shall be; of HDPE, blow molded
in one piece, double-walled, and formed with
compound curve for comfort. Seat arms are ASTM
A48 for Class 25 gray cast iron.



Restroom Area and Shower Area Repairs (Men and Women – North and South and Referee Room)

Remove and replace existing lavatories and Restrooms
Accessories * Include all fittings, valve, p-trap, tail piece, etc.



- Mirror - Welded-Frame Mirror equal or similar to model B-290 2430: 24" W x 30" H by Bobrick
- Surface-Mounted Soap Dispenser equal or similar to B-2112 Classic Series by Bobrick. One per lavatory.



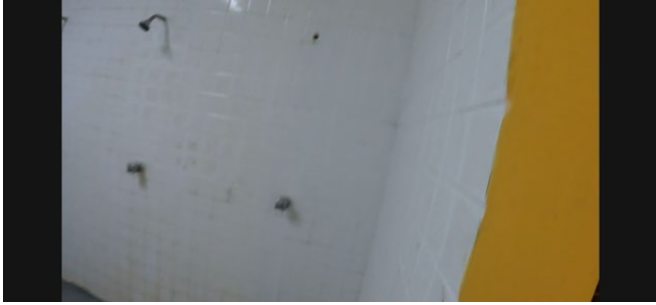
- Lavatory equal or similar to Lucerne Wall-Hung Lavatory Model 0355.012, American Standard with METERING FAUCETS CONVENTIONAL WIDESPREAD model 1340.827 , American Standard - Cast widespread, 0.5 GPM pressure compensating, vandal-resistant multi-laminar spray. Factory set for a maximum of 0.08 gallons per cycle.



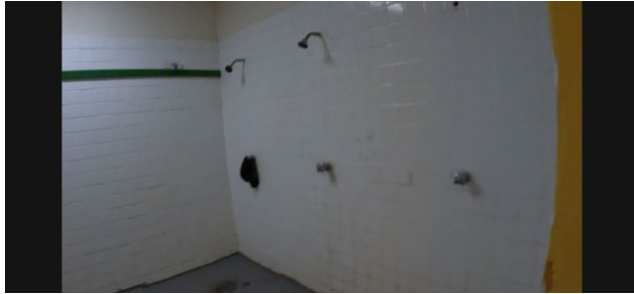
- Surface-Mounted Roll Paper Towel Dispenser equal or similar to model B-2629, 304 Serie by Bobrick. One per restroom.

* All specified Items must be equal or similar

Remove and replace existing shower faucet (where occur)



- Remove and replace existing shower faucet. Patch and paint the affected area. See paint scope. Use COMMERCIAL SHOWER SYSTEMS Institutional 1.5 gpm/5.7 Lpf Showerhead equal or similar to model 1660244.002 by American Standard. Install a new shower faucet equal or similar to Delta Model T17035-p.



- Surface mounted soap dish – equal or similar to Model B-680 Series by Bobrick. Install one (1) per shower unit.



- Clean and paint existing flooring with anti-slip coating following paint manufacturer recommendations.



* All specified Items must be equal or similar

Toilet partitions repairs (where occur)



- Paint all partition compartments. Sand existing surface, clean with denature alcohol, then apply one coat of primer as recommended by manufacturer. Apply three (3) coat of finish coating.

Pro Industrial Pre-Catalyzed Waterbased Epoxy



10 Reviews

[Write a Review](#)

[See all Pro Industrial™ High Performance Coatings products](#)

Intended for use over a wide variety of primers on properly prepared interior metal, wood, masonry, plaster, and drywall, Pro Industrial™ Pre-Catalyzed Waterbased Epoxy offers the adhesion, durability and resistance to stains and most cleaning solvents usually characteristic of two-component water-borne acrylic epoxy products.



- Anchor all existing pilasters with four (4) aluminum angle brackets

- Cover all pilaster base with new stainless steel pilaster Shoes.

- Install new Surface-Mounted Multi-Roll Toilet Tissue Dispenser equal or similar to model B-2888 Classic Series by Bobrick. One per compartment.

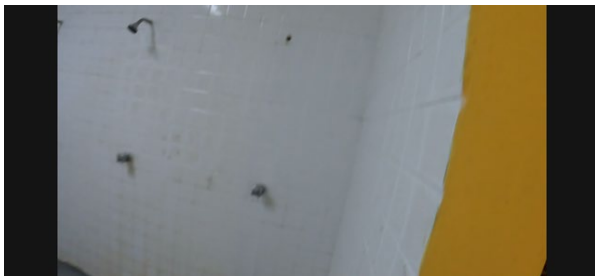


- Premium Stainless Steel Door Latch. Install one per unit.



* All specified Items must be equal or similar

Restroom paint finishes (where occur)



Clean and paint existing flooring with anti-slip coating following paint manufacturer recommendations.

American Safety Technologies AS-150 HAPS Free Anti-Slip Coating

★★★★★

Not Yet Rated | [Write a Review](#)

AS-150 HAPS Free is a single component, epoxy ester non-slip floor and deck coating designed for application in areas of heavy pedestrian grade traffic. This light duty safety coating is both easy and fast to apply and offers optimum adhesion to metal concrete and wood surfaces with the appropriate primer. AS-150 HAPS Free is usable after two years in storage in unopened containers. A partially used container may be resealed and saved for future use. AS-150 HAPS Free is fire retardant in the cured state. It resists gasoline, oil, acids, alkaline and aliphatic solvents.



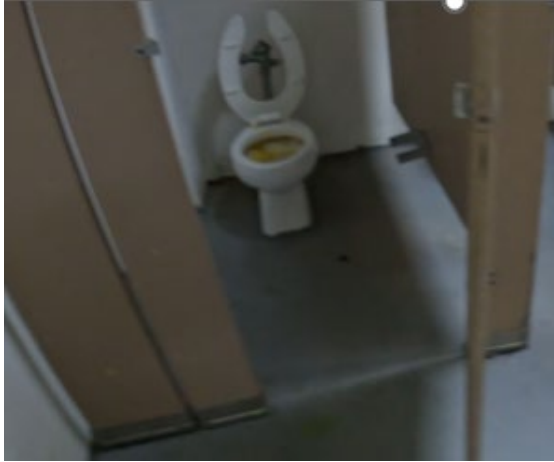
Clean and paint existing wall tile with Rust-Oleum® Specialty Tub & Tile Refinishing kit is a 2-part epoxy acrylic designed to provide excellent adhesion, durability and color retention in high moisture areas. It is ideal for use to renew ceramic tile and porcelain, fiberglass, acrylic, cast iron and steel tubs and sinks. Follow product specification application procedure. Use Coastal Fog Color.



Paint all restroom and shower walls. Clean and patch existing surface, then apply one coat of primer as recommended by manufacturer and apply two (2) coat of finish paint.

Pro Industrial Pre-Catalyzed Waterbased Epoxy

Replace all existing toilet and urinal fixture



- Remove and replace existing toilet fixture. Use American Standard model 2854.128 equal or similar to Madera Chair Height EverClean Toilet System With Manual Piston Flush Valve, 1.28 gpf/4.8 Lpf. Include toilet seats, fittings and valve. Be sure that the fixture fit with the existing plumbing connection.

- Grab Bar – two (2) per unit -24" model B-580616 Series Vinyl-Coated Grab Bar by Bobrick. For ADA unit.



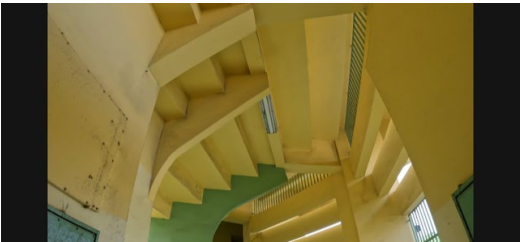
- Remove and replace existing urinal fixture. Use American Standard model 6561.017 equal or similar to TRIMBROOK, 1.0 GPF SIPHON-JET URINAL. Be sure that the fixture fit with the existing plumbing connection.



* All specified Items must be equal or similar

Paint all floor and exterior/interior wall surface, fence wall, steel structures, security grates, railings and steel doors.

Clean and paint all existing surfaces and apply two (2) coats following paint manufacturer recommendations.



Floor Paint Use

American Safety Technologies AS-150 HAPS Free Anti-Slip Coating

Two (2) - coats



Metal Paint Use

Pro Industrial DTM Acrylic Primer/Finish - Two (2) Coat

Exterior Wall Paint Use

Quick Dry Interior/Exterior Stain Blocking Primer - Two (2) Coat

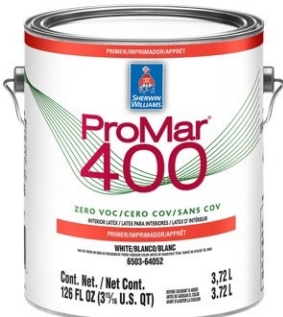
A-100 Exterior Acrylic Latex - Two (2) Coat



Interior Wall Paint Use

Moisture Vapor Barrier Interior Latex Primer/Sealer - Two (2) Coat

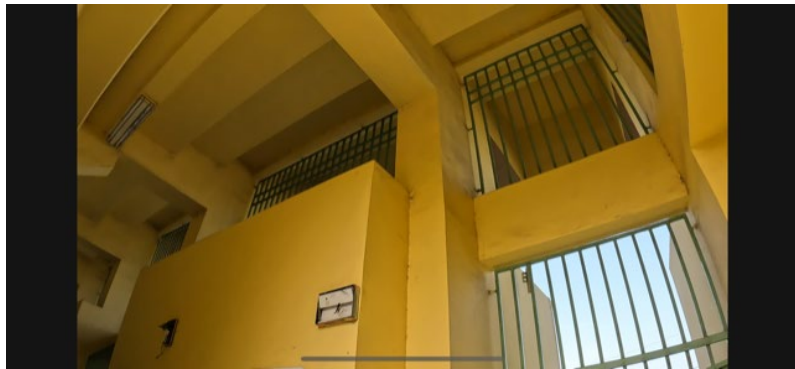
ProMar 400 Zero VOC Interior Latex Primer - Two (2) Coat



Remove and replace existing emergency light and exit signs.



- Remove and replace all existing emergency light. **OUTDOOR WET LOCATION LED EMERGENCY LIGHTING FIXTURE - BATTERY - SURFACE MOUNT – 7 EA**



- Remove and replace all existing EXIT light. **OUTDOOR WET LOCATION LED EMERGENCY LIGHTING FIXTURE - BATTERY - SURFACE MOUNT- 6 EA**

Remove and replace existing emergency light and exit signs.

- Remove and replace all existing interior room florescent lighting fixture by new LED Lighting Fixture equal or similar to FML4W Wraparound by Lithonia Lighting, 30 ea.



- Remove and replace all hallway ceiling lighting fixture 10 each by LED Weatherproof equal or similar to CSVT LED Vapor Tight by Lithonia lighting fixture.



Remove and replace all existing exterior ceiling pack lighting fixture by new LED Lighting Fixture equal or similar to TWP LED 50K, by Lithonia Lighting 18 ea.

- . Remove and replace all hallway ceiling lighting fixture 10 each by LED Weatherproof equal or similar to CSVT LED Vapor Tight by Lithonia lighting fixture.

Existing Lateral Security Grate



- Remove and replace existing security grate. Use existing section pattern. (Both Sides)
- Repair existing railing 50 lf



Existing Spalling Concrete repair (where occur)



- I - Chip the existing loose concrete and treat the exposed rebar. Clean exposed rebar with a steel brush and apply Loctite Extend Rust Neutralizer.

- II- Apply :

Sika® Armatec®-110 EpoCem

BONDING PRIMER AND REINFORCEMENT CORROSION PROTECTION

Sika® Armatec®-110 EpoCem is a cementitious epoxy resin compensated 3-component, solvent-free, coating material with corrosion inhibitor, used as bonding primer and reinforcement corrosion protection.

- ✓ Contains EpoCem® technology - improved bonding agent
- ✓ Extended open times for repair mortars
- ✓ Excellent adhesion to concrete and steel



- III – Patch and finish the affected area with Vinyl Concrete Patch.

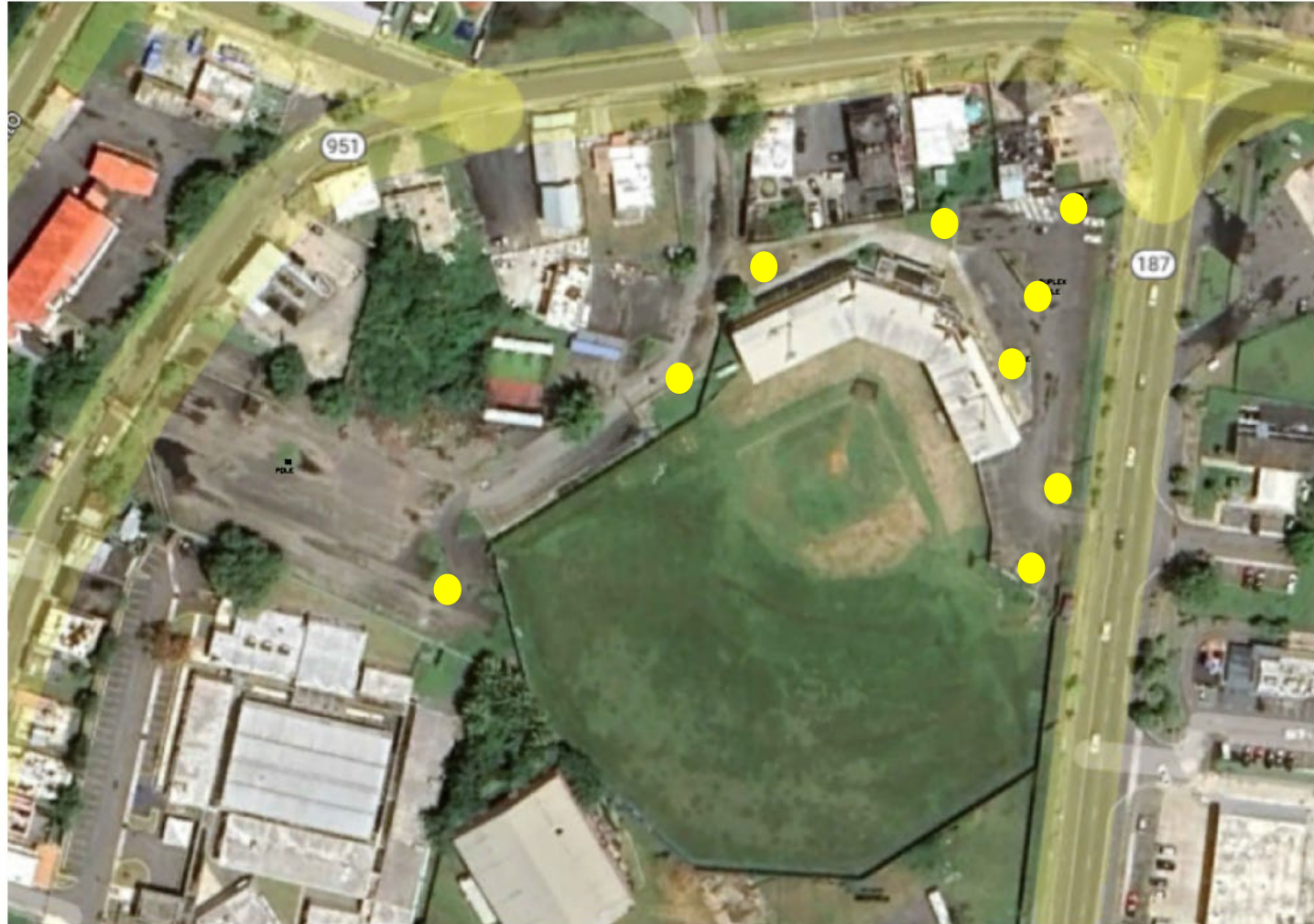
Install New Netting

- Remove and replace existing damage protection foul netting. Use model equal or similar to Carronnet – 77711 #420 knotless 1.75" Baseball & Softball Foul Ball & Perimeter Nets.
- Install bleachers ceiling protection net. Use model equal or similar to Carronnet -77706 #252 knotless 0.75"



Parking Lot Lighting Poles

- Existing Parking Pole
To be replaced



PARKING LOT POLE LOCATION
SCALE: NTS

Parking Lot Lighting Poles



- Remove and replace all existing parking lot light poles, equal or similar to Model MLLG-WL-POLE-15FT-4IN-SQ-BZ as manufactured by LED LIGHTING SUPPLY.



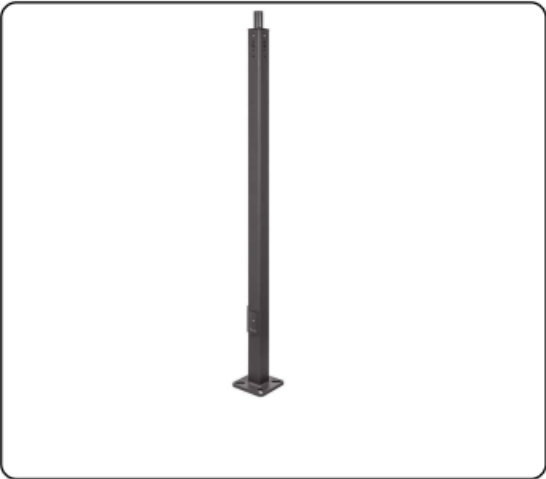
OPTICAL SYSTEM

Lumens:	7,000 - 30,300
Photometry:	Type II, III, IV & V
Efficacy:	126 - 160 LPW
CCT:	3000K, 4000K, 5000K
CRI:	≥70
Upward Light Output Ratio (ULOR):	0 Horizontal Orientation



[View Product Page](#)

15 Foot Steel Square Light Pole | 4 Inches Wide | 11 Gauge



Product Details

SKU: MLLG-WL-POLE-15FT-4IN-SQ-BZ **Web ID:** 1915

15 Foot Steel Pole 4 In Square with Top Cap Architectural bronze 11 gauge steel

Bolt Circle 8-10 In bolt size 3/4x17x3 In 4 sides predrilled and hole plugs included.

Conforms to ASTM-A 500 Grade B: Min Yield Strength-46000 PSI.

Accessories Available:

MLLG-WL-POLE-SQ-AnchorBolts - Anchor Bolts for Square Poles

MLLG-WL-POLE-SQ-ABPP - Anchor Bolts positioning plate for 4 or 5 inch pole. Needed for new installation.

MLLG-WL-POLE-4IN-SQ-BaseCover - 4 Inch Pole Square Base Cover. Dark Bronze.

MLLG-WL-POLE-SQTA-4In-BZ - Square Pole Top Tenon Adapter for 4 Inch Square to 2 3/8 Inch round - Bronze

MLLG-WD-POLE-BH-2-BZ - 2 Fixture 180 Degree Bullhorn mount - Bronze. Mounts on a 2 3/8 inch Tenon.

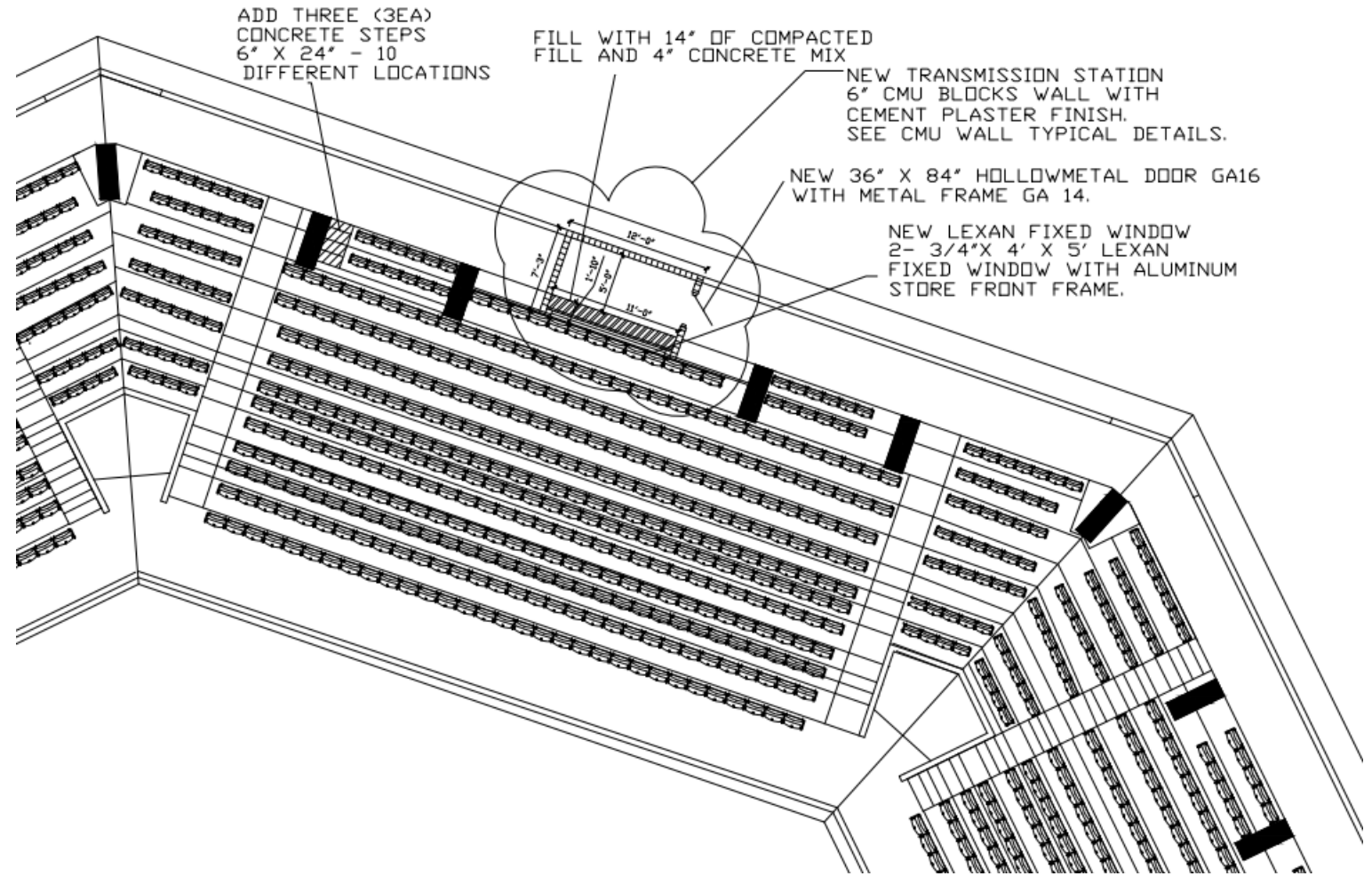
MLLG-WD-POLE-BH-3-BZ - 3 Fixture 180 Degree Bullhorn mount - Bronze. Mounts on a 2 3/8 inch Tenon.

MLLG-WD-POLE-BH-4-BZ - 4 Fixture 180 Degree Bullhorn mount - Bronze. Mounts on a 2 3/8 inch Tenon.

Product Specifications

Height:	15 ft	EPA Rating 70 mph:	15.2
Gauge:	11	EPA Rating 80 mph:	12.5
Size:	4 in X 4 in	EPA Rating 90 mph:	10.1
Finish:	Powder Coated Bronze	EPA Rating 100 mph:	8.5
Weight:	117 lbs	EPA Rating 110 mph:	6.9
Bolt Circle:	8 in - 10 in	EPA Rating 120 mph:	5.4</tbody>
Bolt Projection:	2.75 in</tbody>		

NEW TRANSMISSION STATION:



WINDOW REPLACEMENT:



- Remove and replace existing damage jalousie aluminum – 3 ea at the storage room and office room.
- Remove and replace existing damage plexiglass fixed windows – 5 ea at the ADA room.



REPLACE EXISTING PLEXIGLASS FIXED WINDOWS:

- Replace existing plexiglass fixed windows by a new lexan $\frac{3}{4}$ " x 36 x 60" plexiglass with aluminum storefront frame.



REPLACE EXISTING HOLLOW METAL DOOR

- Replace existing hollow metal doors by a new 36" x 84" ga 16 door with ga 14 door frame. Include lockset.

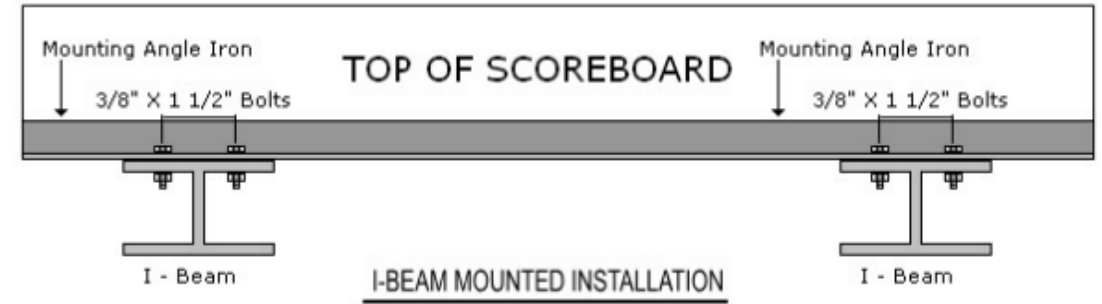


REPLACE EXISTING ELECTRONIC SCOREBOARD

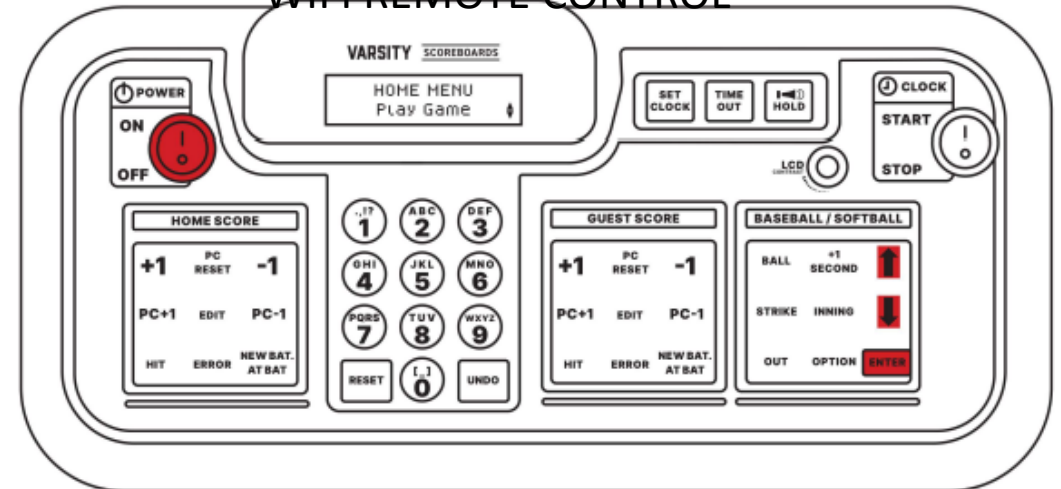


3355 BASEBALL SCOREBOARD

9' x 6' x 8"



WIFI REMOTE CONTROL



Existing Wall Arts

Contractor shall protect all existing wall arts.



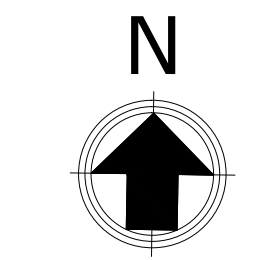
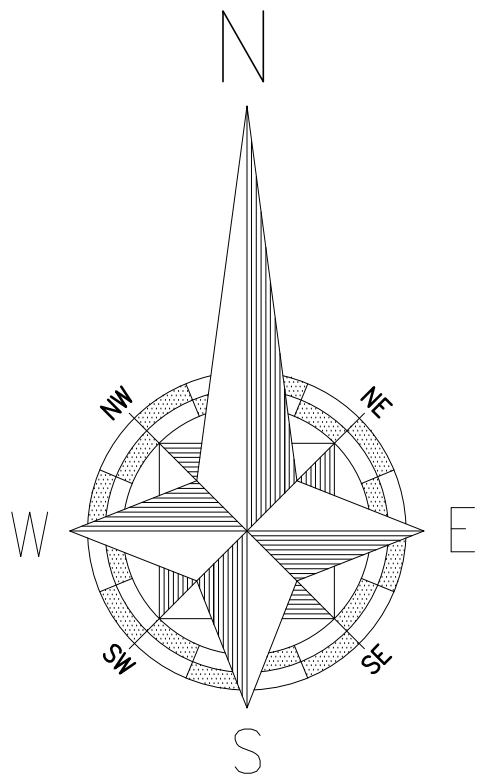
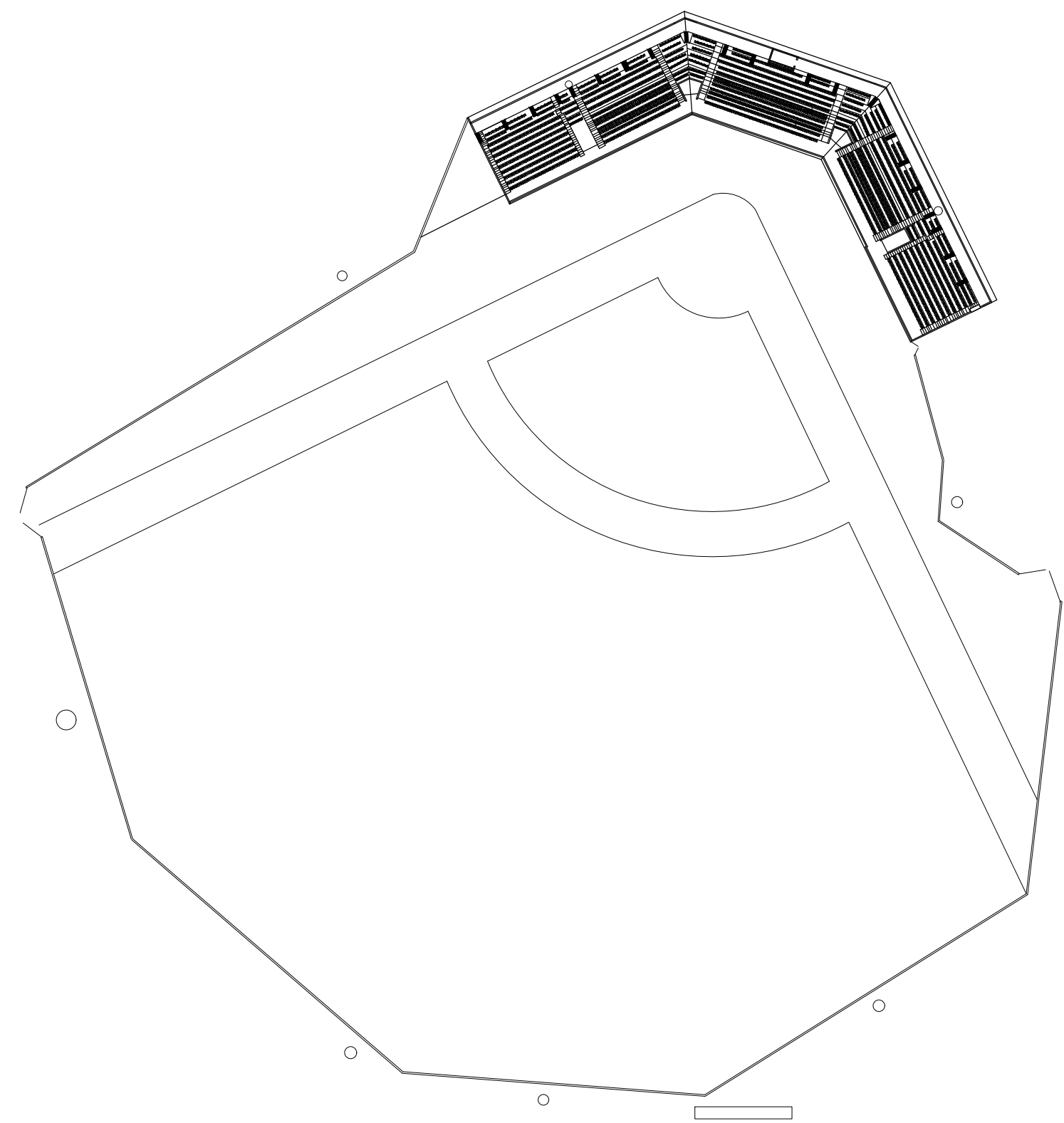
Existing Parking Stall

- Repair existing parking stall : replace, doors, windows, lighting fixture, paint and roof waterproofing system.
- Use Danosa Richport modified





MIGUEL FUENTES PINET STADIUM DAMAGES REPAIRS



ON KEY LLC
PO BOX 72119
ORLANDO, FL 32877-2110
E-MAIL: info@onkeyllc.us

IMPORTANT NOTICE:
ALL DESIGNS, DRAWINGS AND
COPIES ISSUED BY ON KEY LLC
ARE PROPERTY OF DEPARTMENT
OF SPORT AND RECREATION OF
PUERTO RICO, AND CANNOT BE
REPRODUCED OR EMITTED IN
ANY MANNER OR PLACE, EXCEPT
FOR THE PURPOSE OF ITS DESIGN
INTENT OR BY WRITTEN CONSENT
OF DRD.

REVISION	DATE	DESCRIPTION	APPR.

ISSUED BY	DATE	REVISION	DATE	REVISION	DATE

TITLE	OWNER/DEPARTAMENTO DE RECREACION Y DEPORTES DE PUERTO RICO
PROJECT LOCATION	ADDRESS: PO BOX 9023207 SAN JUAN, PUERTO RICO 00902-3207
PROJECT LOCATION	X: 18.433819 Y: -65.877286

SIGNATURE AND SEAL ENG. BRENDA LY GUINNESS LIC. # 17715 DATE: _____	ELECTRONIC SIGNATURE: _____ SHEET IDENTIFICATION T-1 SCALE: NTS
--	---

EMBOSSED SEAL AND
INK BLUE SIGNATURE:



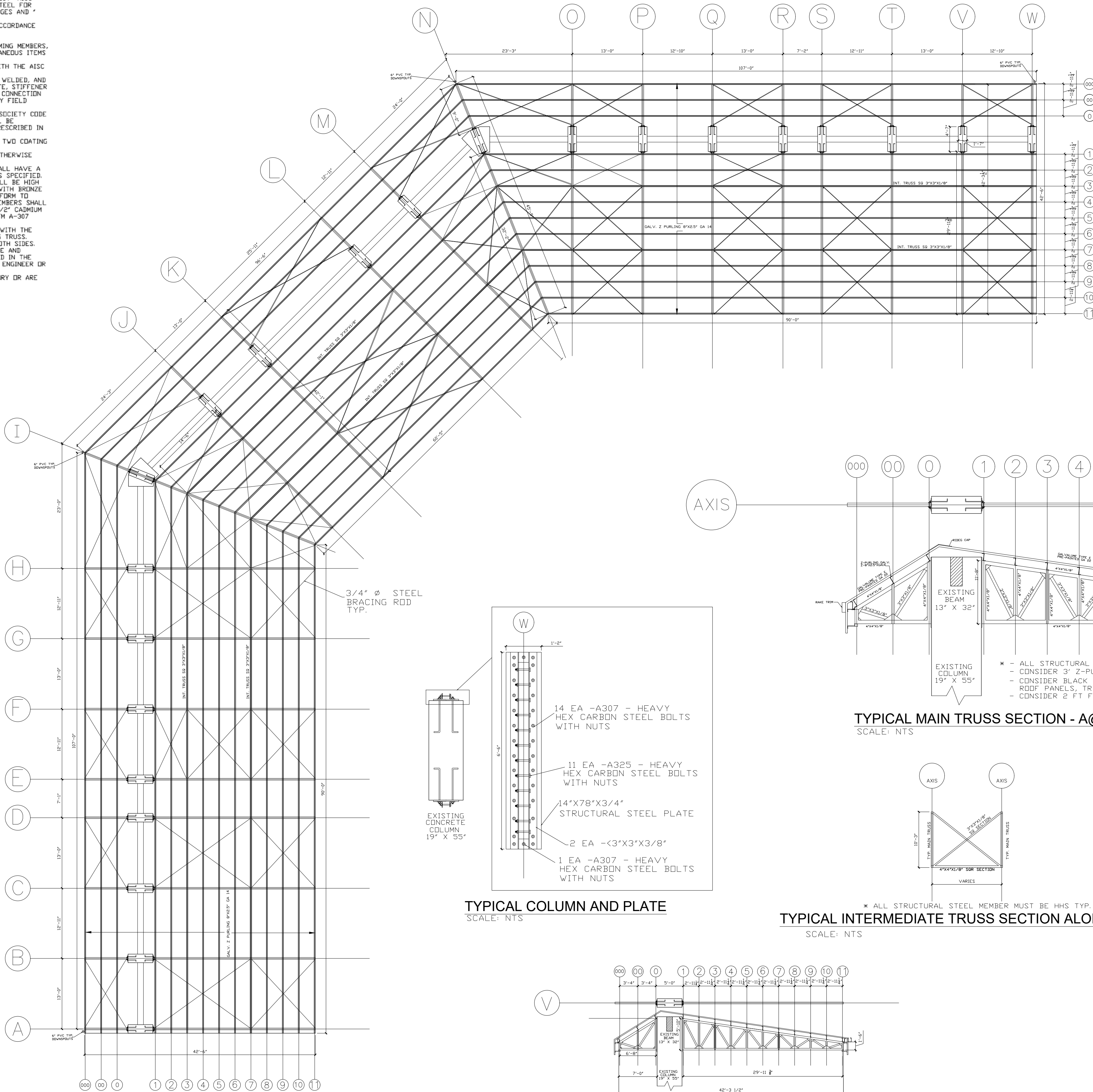
STRUCTURAL STEEL / STEEL ROOF DECK NOTES

(USE ALL THAT APPLIES TO THIS PROJECT)

1. ALL WELDING SHALL CONFORM TO THE REQUIREMENTS OF THE AMERICAN WELDING SOCIETY, AND SHALL DEVELOP THE STRENGTH OF THE WEAKER CONNECTING ELEMENT WITH E-70 ELECTRODES.
2. STRUCTURAL STEEL SHALL COMPLY WITH ASTM A-50.
3. ALL BOLTS SHALL COMPLY WITH ASTM A-325, A-490 AND A-307 FOR LIGHTWEIGHT STEEL.
4. ALL DETAILING AND CONSTRUCTION SHALL BE MADE IN ACCORDANCE WITH LATEST "AISC SPECIFICATIONS FOR THE DESIGN, FABRICATION AND ERECTION OF STRUCTURAL STEEL FOR BUILDINGS", "AISC CODE OF STANDARD PRACTICE FOR STEEL BUILDINGS AND BRIDGES AND " AISC MANUAL OF STEEL CONSTRUCTION.
5. ALL LAPPING, BENDING AND PLACING OF REINFORCEMENT SHALL BE DONE IN ACCORDANCE WITH ACI-318 BLDG. CODE LATEST EDITION.
6. WIND VELOCITY AS PER PUERTO RICO BLDG. CODE, SEISMIC ZONE 4.
7. THE BUILDING SHALL INCLUDE ALL PRIMARY AND SECONDARY STRUCTURAL FRAMING MEMBERS, CONNECTION BOLTS, COVERING, FLASHING, CLOSURE, SEALER AND OTHER MISCELLANEOUS ITEMS AS CALLED FOR ON THE CONTRACT.
8. ALL COLD-FORMED STRUCTURAL MEMBERS SHALL BE DESIGN IN ACCORDANCE WITH THE AISC SPECIFICATION FOR THE DESIGN OF COLD-FORMED STEEL STRUCTURAL MEMBERS.
9. ALL STRUCTURAL STEEL MEMBERS SHALL BE FACTORY BUT, FORMED, PUNCHED, WELDED, AND PRIME-COAT PAINTED FOR BOLTED FIELD ASSEMBLY. ALL BASE PLATES, CAP PLATE, STIFFENER PLATES, AND SPLICE PLATES SHALL BE SHOP FABRICATED COMPLETE WITH BOLT CONNECTION HOLES. ALL BUILDING PARTS SHALL CARRY AN IDENTIFYING PIECE MARK FOR EASY FIELD IDENTIFICATION.
10. ALL WELDING SHALL BE DONE IN ACCORDANCE WITH THE AMERICAN WELDING SOCIETY CODE FOR BUILDING CONSTRUCTION. A CERTIFICATION OF WELDER QUALIFICATION SHALL BE SUPPLIED WHEN REQUIRED OR SPECIFIED. OPERATORS SHALL BE QUALIFIED AS PRESCRIBED IN THE "STANDARD PROCEDURE OF THE AMERICAN WELDING SOCIETY".
11. ALL NONE LIGHT-WEIGHT STEEL MEMBERS SHALL BE PAINTED AT LEAST WITH TWO COATING OF RED OXIDE AND ONE COAT OF MOBILE PAINT.
12. ALL LIGHTWEIGHT STEEL MEMBERS SHALL BE GAGE 16 GALVANIZED UNLESS OTHERWISE INDICATED ON DRAWINGS.
13. STEEL USED IN THE FABRICATION OF COLD-FORMED STRUCTURAL MEMBERS SHALL HAVE A MINIMUM YIELD OF 53,000 PSI WITH A MINIMUM YIELD REQUIRED BY DESIGN OR AS SPECIFIED.
14. ALL BOLTS FOR FIELD ASSEMBLY OF THE PRIMARY STRUCTURAL MEMBERS SHALL BE HIGH STRENGTH BOLTS, INDICATED ON DRAWINGS AND FINISH WILL BE ELECTRO ZINC WITH BRONZE CHEMICAL CHROMED CONVERSION COATING. ALL HIGH STRENGTH BOLTS SHALL CONFORM TO ASTM A-325, UNLESS OTHERWISE SPECIFIED. BOLTS FOR PRIMARY STRUCTURAL MEMBERS SHALL NOT BE LESS THAN 5/8" DIAMETER. BOLTS FOR SECONDARY MEMBERS SHALL BE 1/2" CADMIUM PLATED MACHINE BOLTS CONFORMING PLATED MACHINE BOLTS CONFORMING TO ASTM A-307 UNLESS OTHERWISE SPECIFIED.
15. CONTRACTOR SHALL VERIFY THAT THE STEEL COLUMN ANCHORAGE COINCIDES WITH THE EXISTING COLUMNS ON THE GROUND FLOOR. IN CASE OF MAKE A PRE-ENGINEERING TRUSS.
16. GALV. PLATE SHALL BE FACTORY PAINTED WHITE BAKED CHANNEL ON BOTH SIDES.
17. THE CONTRACTOR SHALL PROVIDE THE ANCHOR SYSTEM, FOR THE COLUMN BASE AND VERIFY THAT CONFORM WITH THE ULTIMATE PULLOUT AND SHEAR LOAD, INDICATED IN THE PRE-ENGINEERING STEEL BLDG. DRAWING AND THEY SHALL BE APPROVED BY THE ENGINEER OR ARCHITECT'S INSPECTION.
18. ALL STRUCTURAL STEEL SURFACE THAT ARE ENCASED IN CONCRETE OR MASONRY OR ARE ENCASED BY BUILDING FINISH, SHALL BE LEFT UNPAINTED.

ROOF STRUCTURE SCOPE OF WORK:

- 1 - THE INFORMATION INCLUDED IN THIS DOCUMENT IS FOR REFERENCE ONLY DURING THE PROCUREMENT PROCESS. THE CONTRACTOR IS RESPONSIBLE TO PROVIDE A CERTIFIED SIGNED AND SEALED UPDATED DESIGN, COMPLYING WITH ALL CURRENT DESIGN CODES AND REGULATIONS.
- 2 - THE CONTRACTOR IS RESPONSIBLE TO VERIFIED ALL DIMENSIONS, QUANTITIES AND EXISTING STRUCTURE CONDITIONS.
- 3 - THE CONTRACTOR IS RESPONSIBLE TO REMOVE, DISPOSE AND REPLACE THE EXISTING ROOF STRUCTURE.
- 4 - THE NEW STRUCTURE MUST BE PAINTED. COLOR TO BE SELECTED BY OWNER. APPLY GALVACON PROTECTION BY LANCO, TO ALL WELDED SPOTS.



EXISTING STADIUM ROOF STRUCTURE

SCALE: 3/32" = 1'-0"

TYPICAL COLUMN AND PLATE

SCALE: NTS

TYPICAL MAIN TRUSS SECTION - A@W

SCALE: NTS

TYPICAL INTERMEDIATE TRUSS SECTION ALONG- AXIS 3 AND 7

SCALE: NTS

TYPICAL MAIN TRUSS - FROM A@W AXIS

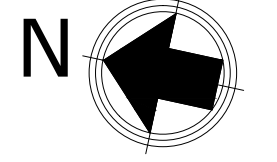
SCALE: 3/32" = 1'-0"

- * ALL STRUCTURAL STEEL MEMBER MUST BE HHS TYP.
- CONSIDER 3" Z-PURLINGS OVERLAP TYP.
- CONSIDER BLACK STEEL FOR STRUCTURE AND GALV. PURLINGS ROOF PANELS, TRIMS AND GUTTER.



STADIUM AERIAL VIEW

SCALE: NTS



ON KEY LLC
PO BOX 772119
ORLANDO, FL 32877-2110
E-MAIL: info@onkeyllc.us

IMPORTANT NOTICE:

ALL DESIGNS, DRAWINGS AND SPECIFICATIONS ISSUED BY ON KEY LLC ARE PROPERTY OF DEPARTMENT OF SPORTS AND RECREATION OF PUERTO RICO, AND CANNOT BE REPRODUCED OR EXHIBITED IN ANY MANNER OR PLACE, EXCEPT FOR THE PURPOSE OF THIS DESIGN, WITHOUT THE WRITTEN CONSENT OF ON KEY LLC.

REVISION	DATE	DESCRIPTION

DESIGNED BY	CHECKED BY	DATE	PROJECT NO.

PROJECT TITLE: EXISTING ROOF STRUCTURAL AS-BUILT
OWNER: DEPARTAMENTO DE RECREACION Y DEPORTES DE PUERTO RICO
PROJECT LOCATION: PINET STADIUM, LOIZAI, PR
PROJECT NO.: PO BOX 9023207
SUBMITTED BY: SAN JUAN, PUERTO RICO 00902-3207
DATE: PO BOX 9023207
Y: -65.877286
X: 18.433819

SIGNATURE AND SEAL
ENG. BRENDA L. GUINNESS
LIC. # 17715
DATE: _____

ELECTRONIC SIGNATURE:

SHEET IDENTIFICATION

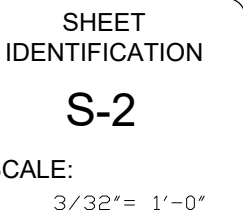
S-1

SCALE: 3/32" = 1'-0"

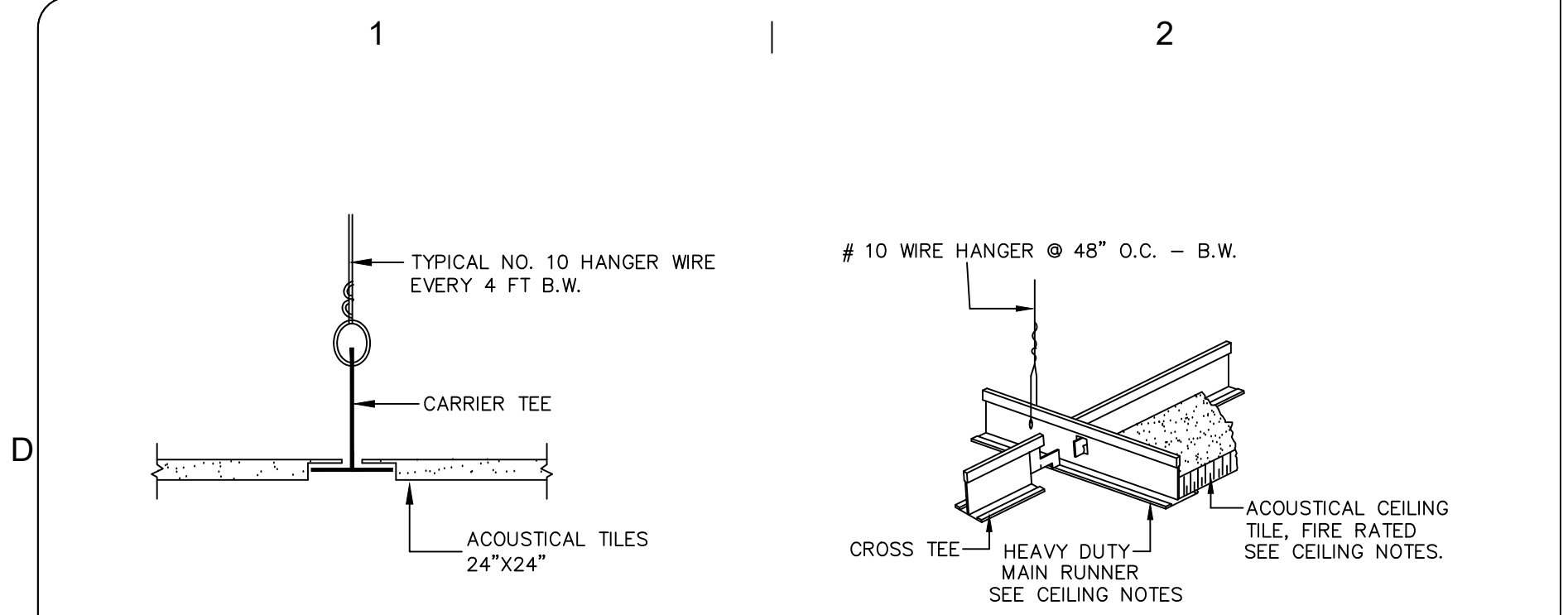
EMBOSSED SEAL AND
INK BLUE SIGNATURE:



EXISTING STADIUM - MIGUEL FUENTES PINET
SCALE: NTS



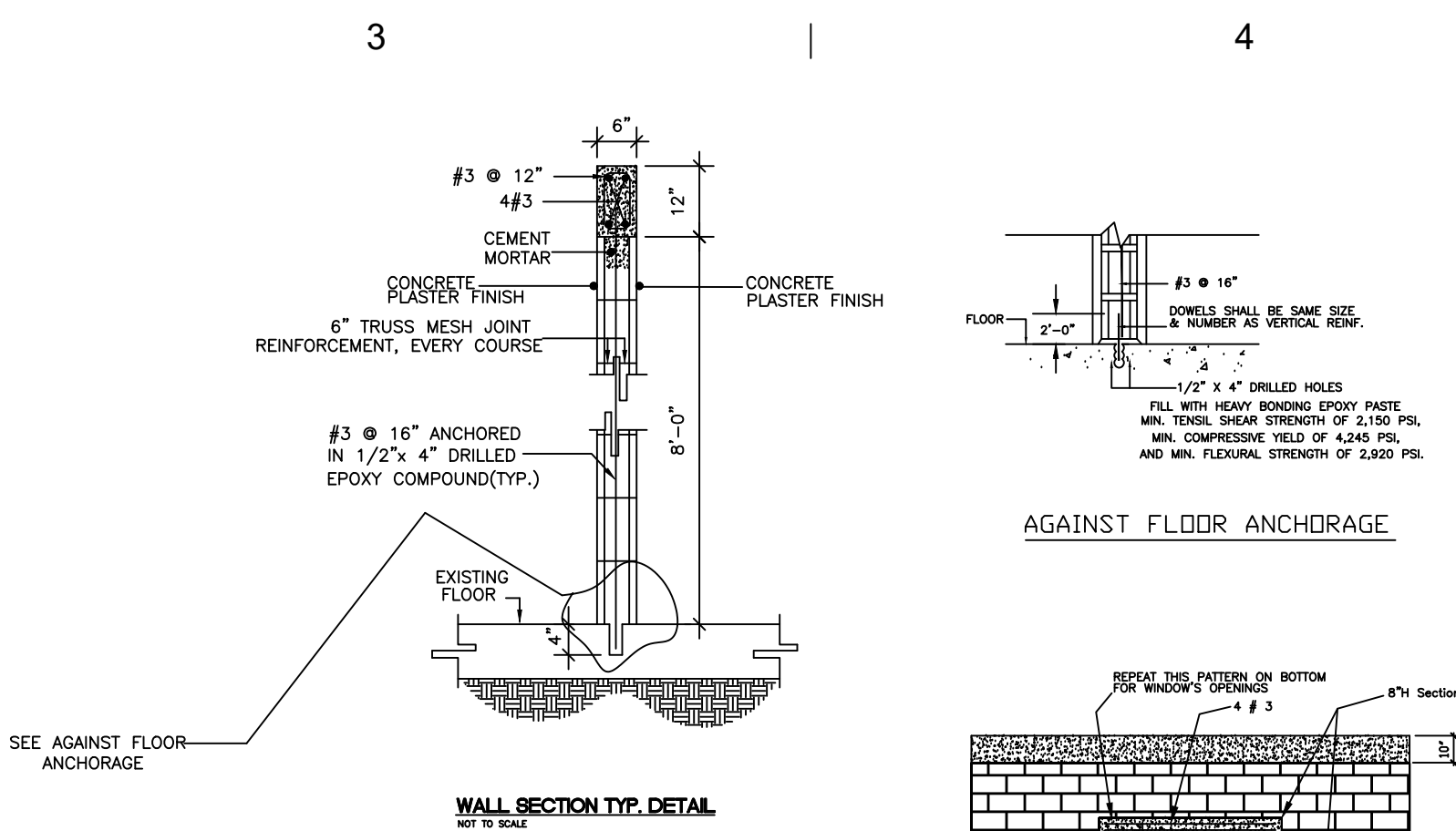
EMBOSSSED SEAL AND
INK BLUE SIGNATURE:



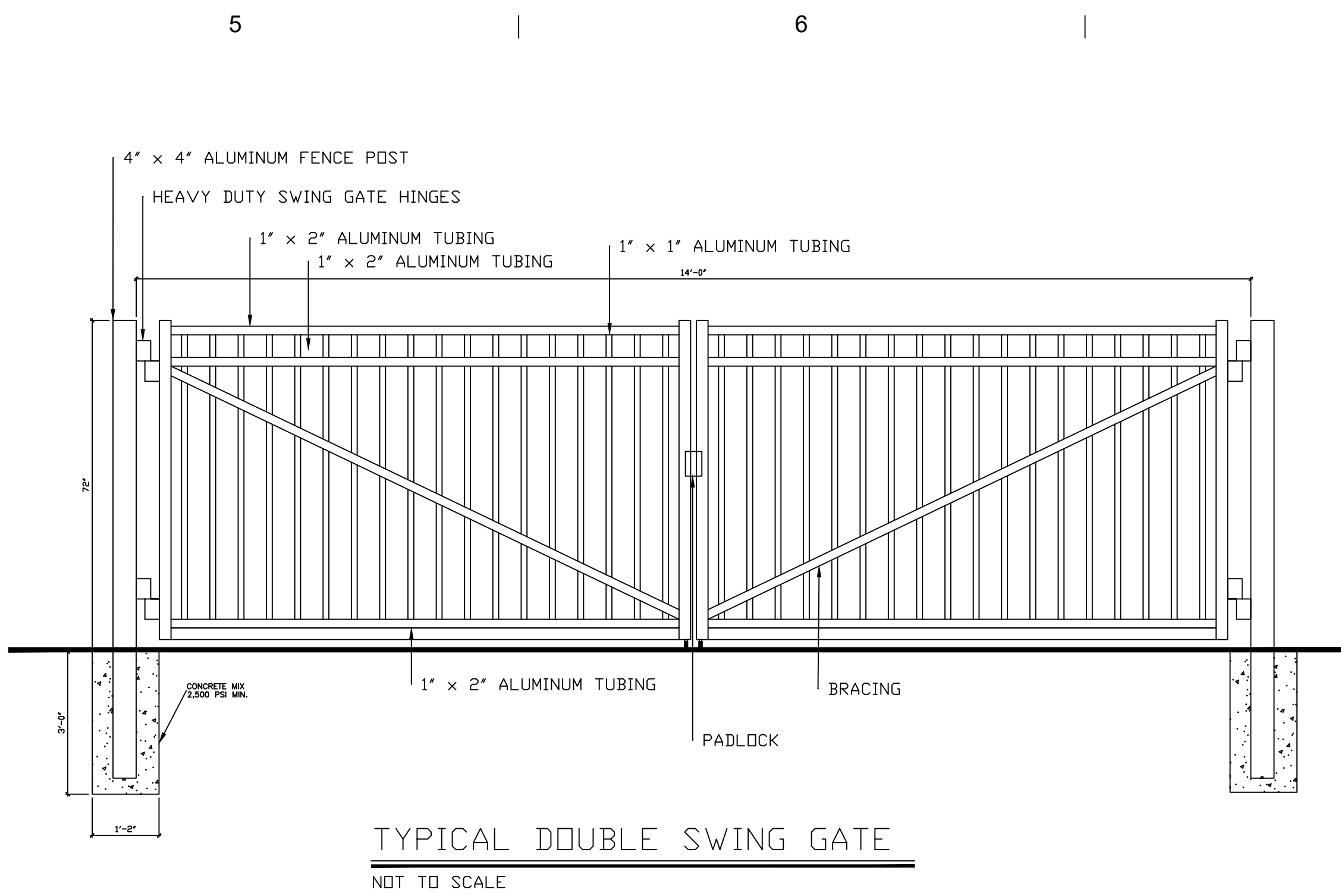
CEILING NOTES:

1. SUPPLY AND INSTALL NEW ACOUSTIC CEILING SYSTEM FOR NEW TRANSMISSION STATION.
2. NEW CEILING TILE: 24" x 24" x 7/8" NCR=0.55, 1 HR FIRE RESISTANCE, CAC 45., LR-1 MOLD, MILDEW AND FUNGUS RESITANCE.
3. CEILING SUSPENSION SYSTEM: CUBE GRID 15/16" - 360° PAINTED COMPONENTS. WHITE COLOR.
4. ALL SUSPENDED CEILINGS SHALL BE MOUNTED AT 96" ABOVE FINISH FLOOR ELEVATION.

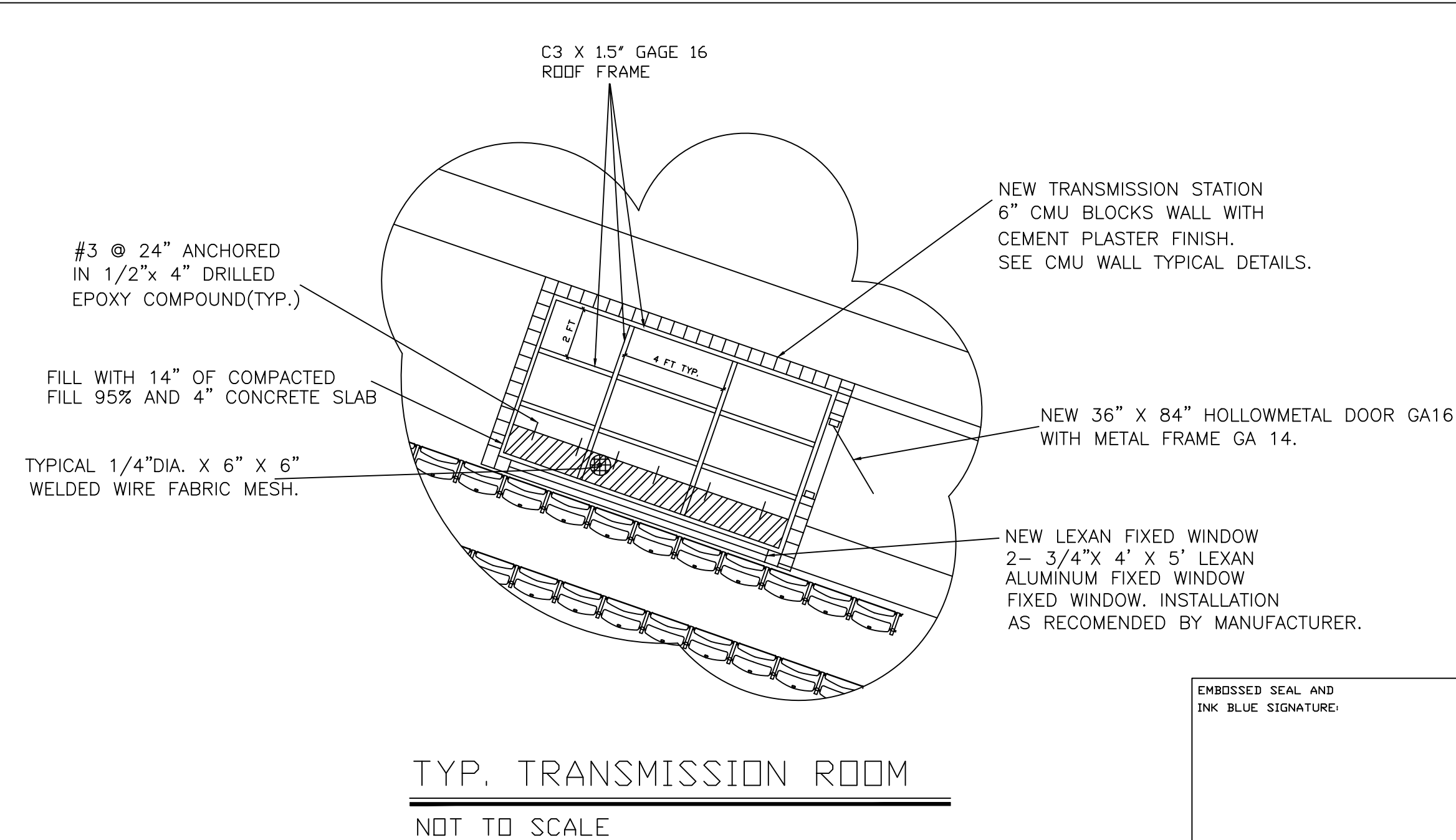
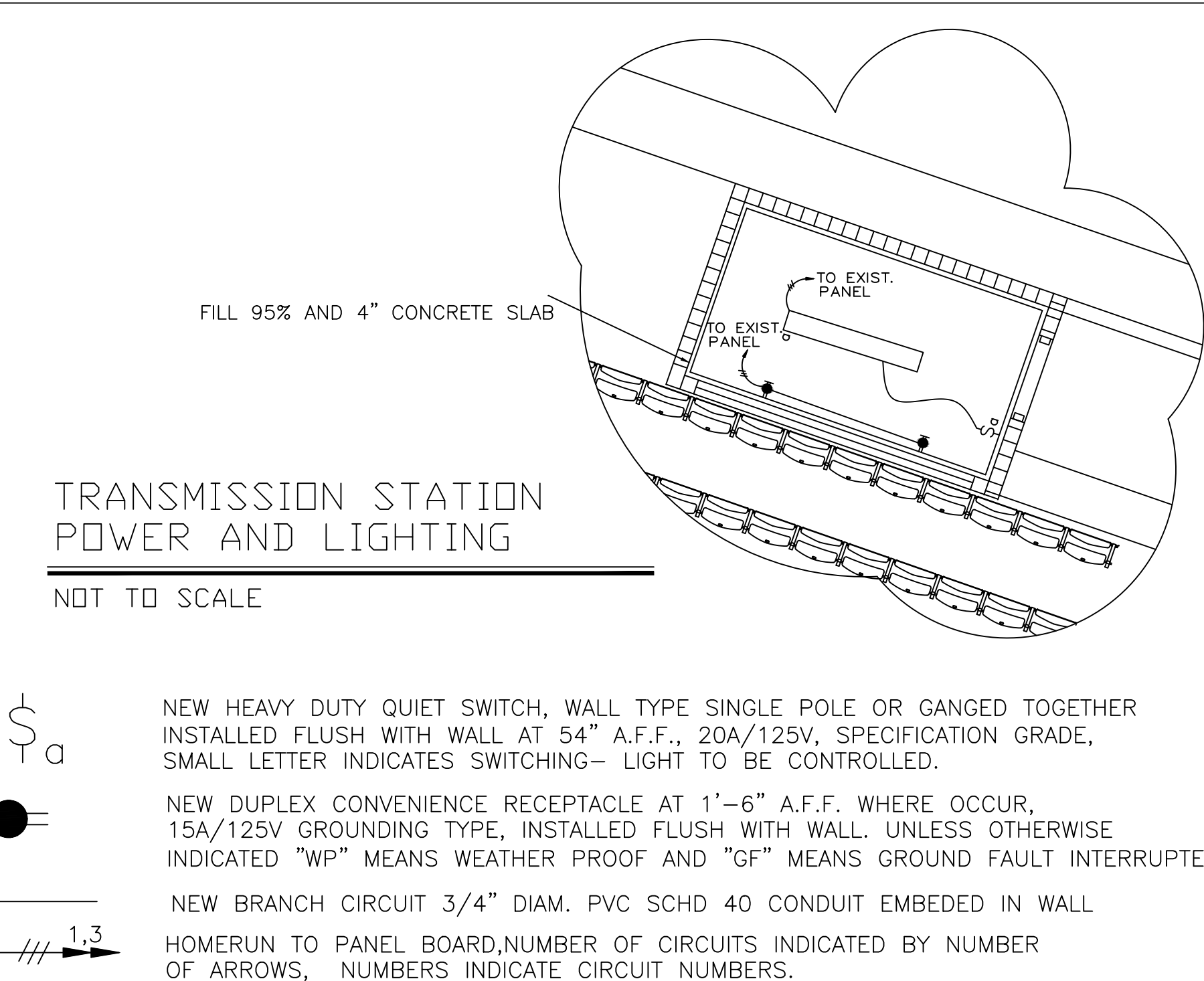
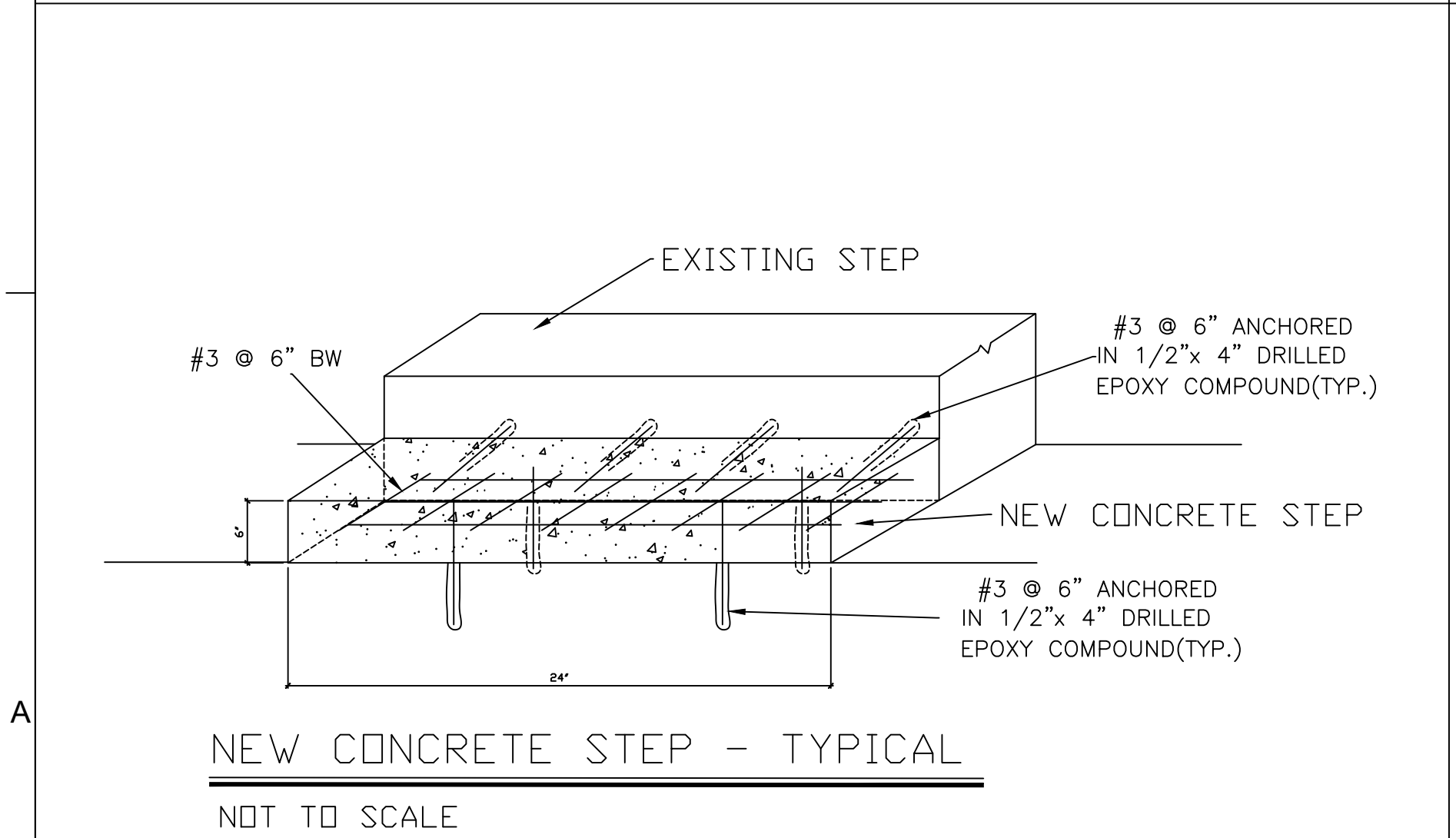
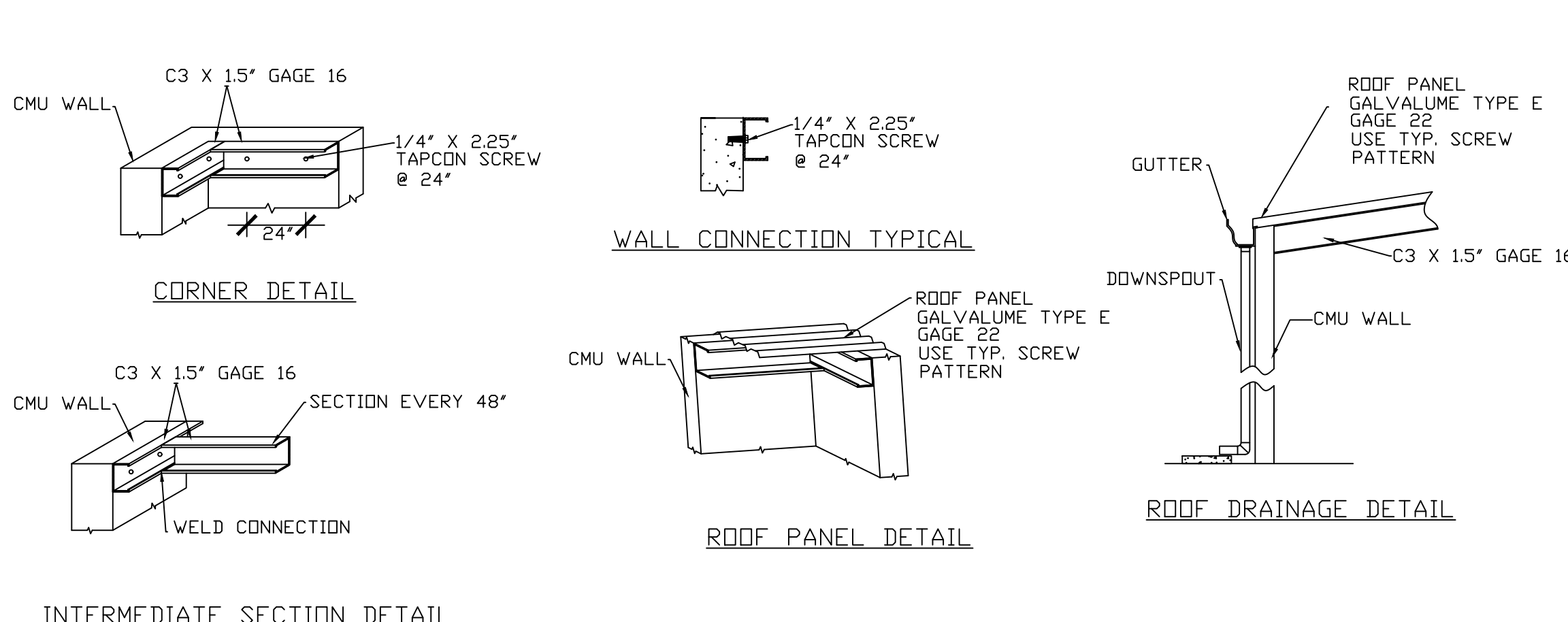
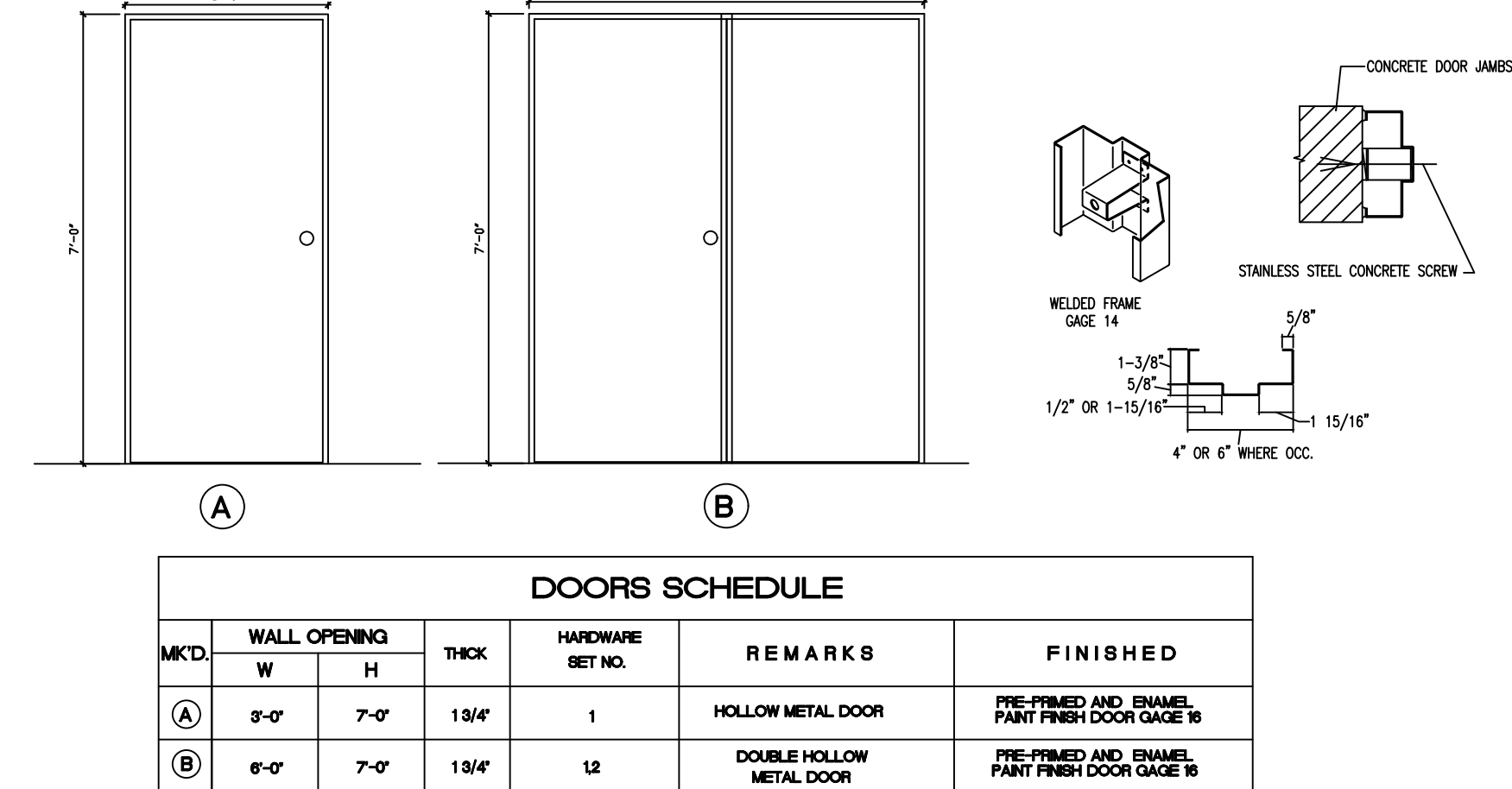
TRANSMISSION STATION CEILING DETAIL TYP.
NOT TO SCALE



TYPICAL WALL WITH FLOOR ANCHORAGE DETAIL
NOT TO SCALE



- NOTES:
- PAINT NOTES:
1. ALL INTERIOR AND EXTERIOR WALLS SHALL BE PAINTED WITH THREE COATS OF PAINT. THE INTERIOR THREE COAT SYSTEM CONSISTS OF A SEALER PRIMER COAT AND TWO FINISH COATS WITH 100 % ACRYLIC LATEX PAINT, EGGSHELL FINISH. EXTERIOR THREE COAT SYSTEM CONSISTS OF A QUICK DRY STAIN BLOKER AND SEALER PRIMER AND TWO FINISH COAT OF 100% ACRYLIC PAINT. COLOR TO BE SELECTED BY THE ENGINEER. PATCH AND REPAIR WITH CONCRETE PLASTER ALL SURFACE IF NECESSARY, BEFORE PAINT.
 2. ITEMS NOT TO BE PAINTED WHICH ARE IN CONTACT WITH OR ADJACENT TO PAINTED SURFACES SHALL BE REMOVED OR PROTECTED PRIOR TO SURFACE PREPARATION AND PAINTING OPERATIONS. ITEMS REMOVED PRIOR TO PAINTING SHALL BE REPLACED WHEN PAINTING COMPLETED.
 3. EXTERIOR WALL TO BE PAINTED SHALL BE CLEAN WITH WATER BLASTER MACHINE AND BE FREE OF FOREING MATTER BEFORE APPLICATION OF PAINT OR SURFACE TREATMENTS. OIL AND GREASE SHALL BE REMOVED PRIOR TO MECHANICAL CLEANING. CLEANING SHALL BE PROGRAMED SO THAT DUST AND OTHER CONTAMINANTS WILL NOT FALL ON WET, NEWLY PAINTED SURFACES.
 4. BLISTERING, CRACKING, FLAKING AND PEELING OR OTHER DETERIORATED COATINGS SHALL BE REMOVED. SLICK SURFACES SHALL BE ROUGHENED. DAMAGED AREAS SUCH AS, BUT NOT LIMITED TO, NAIL HOLES, CRACKS, CHIPS, AND SPALLS SHALL BE REPAIRED WITH SUITABLE MATERIAL TO MATCH ADJACENTS UNDAMAGED AREAS.
 5. STEEL STRUCTURE SHALL BE SANDED AND PAINTED WITH ONE ANTI -RUST PRIMER AND TWO COAT OF STOPS RUST INDUSTRIAL WATER BASE ENAMEL PAINT.
 6. SEE PAINTING SPECIFICATIONS - 09900.



N

ON KEY LLC

PO BOX 722110

ORLANDO, FL 32877-2110

E-MAIL: info@onkeyllc.us

IMPORTANT NOTICE:

ALL DESIGNS, DRAWINGS AND COPIES ISSUED BY ON KEY LLC ARE PROPERTY OF DEPARTMENT OF SPORT AND RECREATION OF PUERTO RICO AND CANNOT BE REPRODUCED OR EXHIBITED IN ANY MANNER OR PLACE EXCEPT FOR THE PURPOSE OF ITS DESIGN INTENT OR BY WRITTEN CONSENT OF DRG.

DESIGNED BY: DATE: NEW YORK, NY: 0808

DRAWN BY: DATE: NEW YORK, NY: 0808

CHECKED BY: DATE: NEW YORK, NY: 0808

APPROVED BY: DATE: NEW YORK, NY: 0808

PROJECT TITLE: OWNER: DEPARTAMENTO DE RECREACION Y DEPORTES DE PUERTO RICO

DRAWING NO.: 10000000000000000000

PROJECT LOCATION: ADDRESS: PO BOX 9023207 SAN JUAN, PUERTO RICO 00902-3207

X: 18.433819 Y: -65.877286

SHEET DESCRIPTION:

ADDITIONAL DETAILS

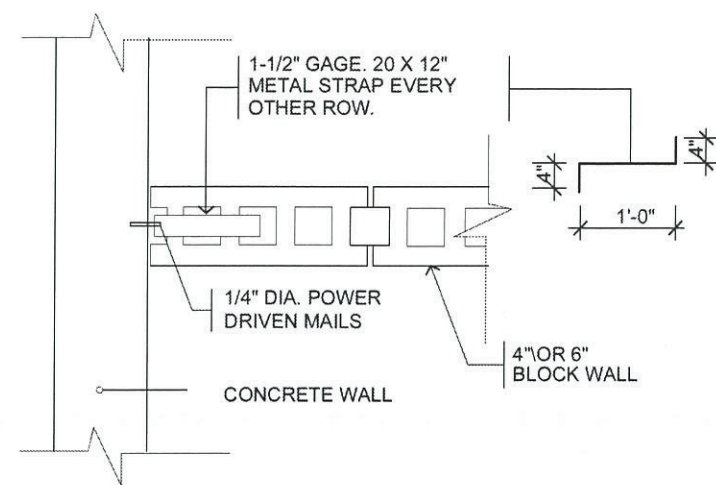
SIGNATURE AND SEAL: ENG. BRENDA LY GUINDONES LIC. # 17715

DATE:

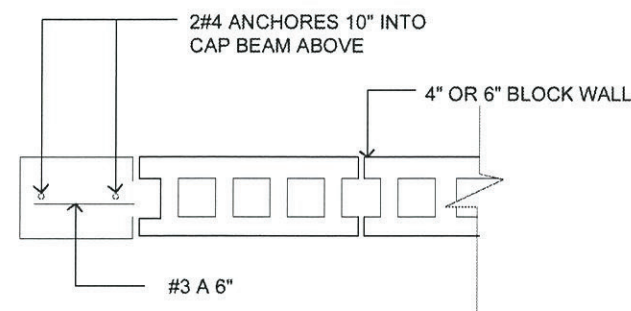
ELECTRONIC SIGNATURE:

SHEET IDENTIFICATION: A-3

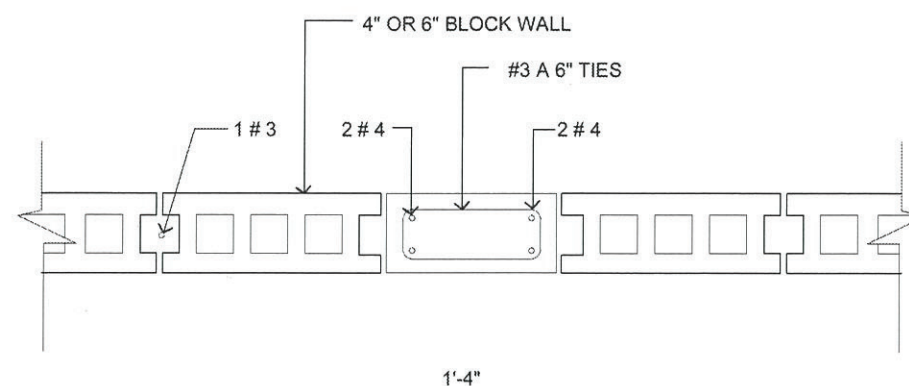
SCALE: NOT TO SCALE



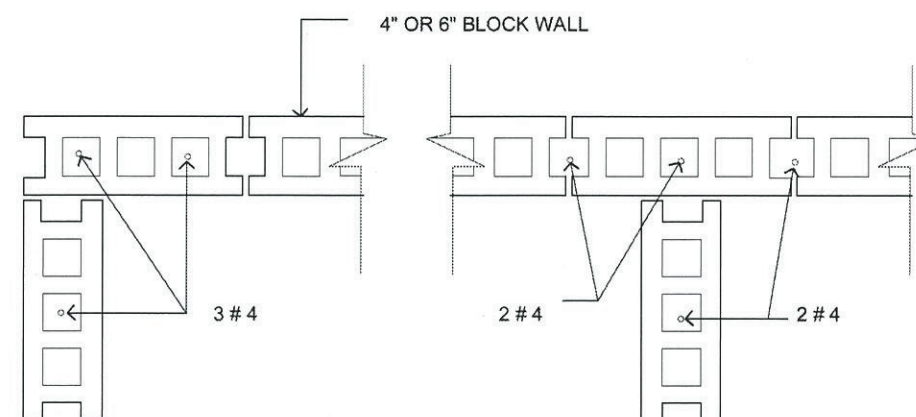
TYP. ANCHORAGE OF BLOCK WALL PARTITIONS TON CONC. WALLS



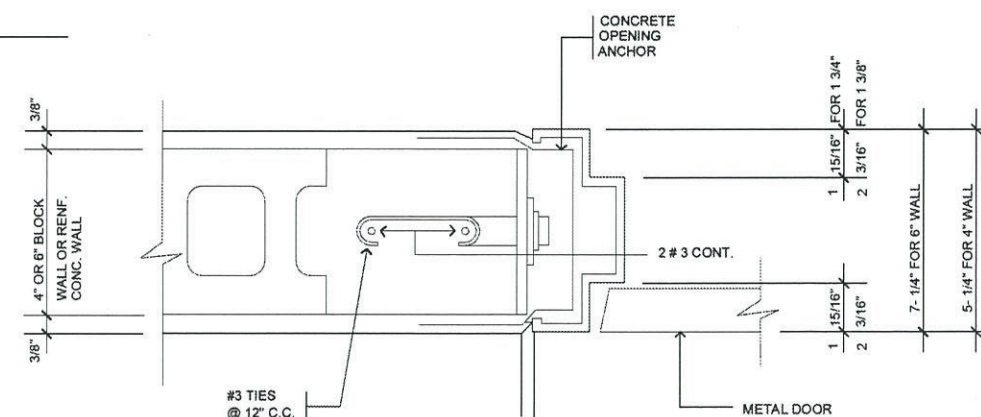
PARTITIONS TON CONC. WALLS



CONCRETE COLUMN DETAIL



TYP. BLOCK WALL DETAILS



TYPICAL METAL FRAME INST.

DETAIL ALL JAMB

NOT TO SCALE

NOTE:
TO BE INCLUDED ONLY IF IT
APPLIES TO EACH PROJECT



Bid Documents for
Method of Repair (MOR)

Departamento de Recreación y Deporte

SAN JUAN, P.R.

PROJECT NAME

ADDRESS

DATE: JULY 15, 2020

REVISIONS: 03

DRAWN BY: MIRANDA RODRIGUEZ

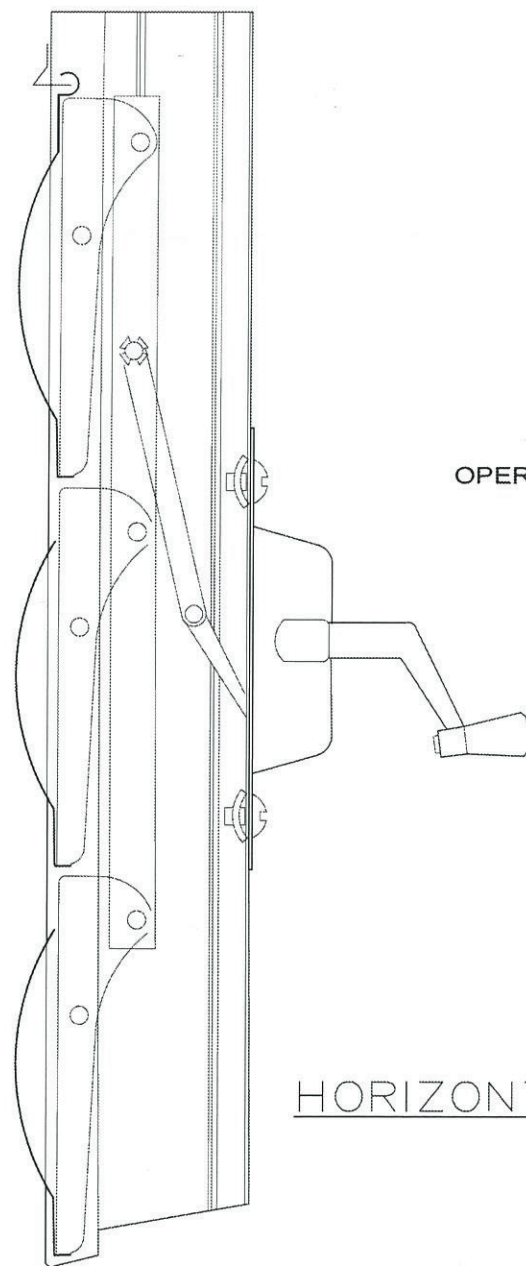
SCALE: NOT TO SCALE

SHEET NAME:

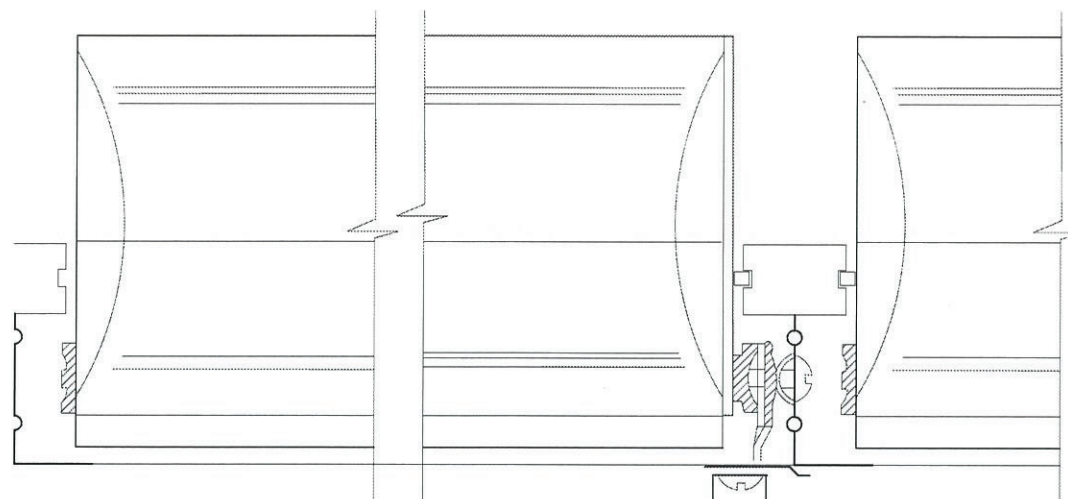
CMU CONCRETE
WALL DETAILS

D-03

SHEET 03 OF 25



OPERATOR



STD. JAM DETAIL

INTEGRAL MULLION-JAMB DETAIL

HORIZONTAL SECTION

OPERATOR

ALUMINUM JALOUSES TYPE

.062 STANDARD ROLEED FORMED WINDOW

MODEL LA-28

(EQUAL OR SIMILAR TO AS THE ONE MANUFACTURED BY LAUSELL)

HORIZONTAL SECTION

TYPICAL ALUMINUM JALOUSES DETAIL FOR ALL WIN

SCALE: 1/8" = 1'-0"



Bid Documents for
Method of Repair (MOR)

Departamento de Recreación y Deporte

SAN JUAN, P.R.

PROJECT NAME

DATE

REVISIONS

DRAWN BY:

SCALE:

SHEET NAME:

CMU CONCRETE

WALL DETAILS

D-02

SHEET 02 OF 26

NOTE:

TO BE INCLUDED ONLY IF IT
APPLIES TO EACH PROJECT

GENERAL NOTES

NOTES:

- 1- In activities that backfill is required the contractor must use A-2-4 or similar compacted in layers of 6" inches thickness at 95% and been verified by laboratory tests, which will be paid by the contractor.
2. All document included in this bidding process are part of the contract.
3. The contractor shall connect the structure to the existing water and sewer connection services of the site if it where not connected.
4. Demolition and construction disposal will be contractor's responsibility.
5. The contractor will be responsible to implement Plan CEST, PFE (Permiso de Fuente de Emision) and DS3 (Desperdicios Solidos no Peligrosos) as required by the Junta de Calidad Ambiental. (If required)
6. The contractor shall maintained the site clean and free of debris during work in progress.
7. A boundary shall be identified on field to isolated the construction area from the areas that are not impacted. The limit will be defined using a temporary fence that must be provided by the contractor.
8. The contractor will be responsible for all the demolition and debris disposal during the construction. Everything must be coordinated with the Consultant including any foundation demolition if it where the case.
9. "The contractor will plant Soisa Meyer grass in tight squares in all the Green areas affected by the construction.
10. All site dimensions must be verified on site by the contractor.
11. The contractor shall be responsible for any damage cause by the contractor or his employee to the existing infrastructure on the field.
12. All sidewalks finishes shall be broom finish. (where occur)
13. The contractor shall be familiarized with the existing site conditions before the bidding.
14. The construction site perimeter will be protected with a temporary fence.
15. The contractor will submit a work plan in addition to the cost breakdown for payment for owner's Consultant approval.
16. If applicable any slopes that are generated on the site will not have a slope greater than 1:1 and shall be duly stabilized with Jute or a Similar approved geotextile product and Soysa Meyer grass will be tightly installed for permanent stabilization.
17. The contractor Will familiarize himself with the included Electrical and structural notes and specifications where applicable.

Bid Documents for
Method of Repair (MOR)

SEAL

SIGNATURE

DEPARTAMENTO DE RECREACIÓN Y DEPORTES (DRD)

PUERTO RICO

PROJECT NAME:

DATE: July 15, 2020
REVISIONS: 03

DRAWN BY: Miralida Rodriguez
SCALE: N/A

SHEET NAME:
GENERAL NOTES

Ejemplo de Rótulo de Proyecto:



Guidelines:

<https://www.dropbox.com/sh/7cz6b5t3tp5bfww/AADi7GBYeIwFVW0HFLTKEI04a?dl=0>



INFRAESTRUCTURA

INSTALACIÓN DE SISTEMA DE ALCANTARILLADO SANITARIO

SECTOR YAMBELÉ CARR 8177 KM 0.3, BO MONACILLO
SAN JUAN

INVERSIÓN: \$1,000,000.00

EMPLEOS CREADOS : 100

CONTRATO NUM 2021-

DESCRIPCION
AGENCIA



Ejemplo área
blanca (reservada)
para logos. De tenerlos
colocarlos de abajo para arriba.



INFRAESTRUCTURA

INSTALACIÓN DE SISTEMA DE ALCANTARILLADO SANITARIO

SECTOR YAMBELÉ CARR 8177 KM 0.3, BO MONACILLO
SAN JUAN

INVERSIÓN: \$1,000,000.00

EMPLEOS CREADOS : 100

CONTRATO NUM 2021-



CENTRAL OFFICE FOR RECOVERY,
RECONSTRUCTION AND DEVELOPMENT
COR3

DESCRIPCION
AGENCIA



PEDRO R. PIERLUISI
GOBERNADOR DE PUERTO RICO